

For Research Use Only

# CD86 Monoclonal Matched Antibody Pair, PBS Only



Catalog Number:MP50056-1

## Capture Antibody Information

**Catalog Number:**  
68674-1-PBS  
**Host:**  
Mouse  
**Isotype:**  
IgG1  
**Purification Method:**  
Protein G purification

**Clone ID:**  
2G12B8  
**Reactivity:**  
human

**Conjugate:**  
Unconjugated  
**Full name:**  
CD86 molecule  
**Gene ID:**  
942

## Detection Antibody Information

**Catalog Number:**  
68674-2-PBS  
**Host:**  
Mouse  
**Isotype:**  
IgG1  
**Purification Method:**  
Protein G purification

**Clone ID:**  
1D6H7  
**Reactivity:**  
human  
**GenBank:**  
NM\_175862

**Conjugate:**  
Unconjugated  
**Full name:**  
CD86 molecule  
**Gene ID:**  
942

## Applications

**Tested Applications:**  
Sandwich ELISA

**Range:**  
78.1-5000 pg/mL (Sandwich ELISA)

**Recommended Dilutions:**  
It is recommended that this reagent should be titrated in each testing system to obtain optimal results.

## Product Information

MP50056-1 targets CD86 in immunoassays as a matched antibody pair. Validated in Sandwich ELISA.

Capture antibody: CD86 Monoclonal antibody, PBS Only (Capture) 68674-1-PBS (2G12B8). 100 µg. Concentration 1 mg/mL.

Detection antibody: CD86 Monoclonal antibody, PBS Only (Detector) 68674-2-PBS (1D6H7). 100 µg. Concentration 1 mg/mL.

Unconjugated mouse monoclonal antibody pair in PBS only storage buffer at a concentration of 1 mg/mL, ready for conjugation.

Matched antibody pairs are designed for use in a variety of assays and platforms that require matched antibody pairs.

Antibody use should be optimized for each application and assay.

## Storage

**Storage:**  
Store at -80°C.  
**Storage buffer:**  
PBS only

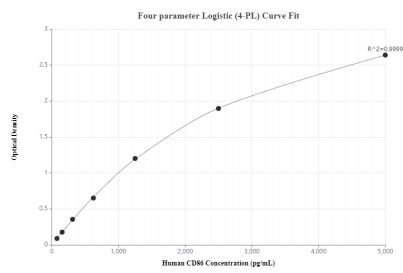
For technical support and original validation data for this product please contact:

T: 1 (888) 4PTGLAB (1-888-478-4522) (toll free in USA), or 1(312) 455-8498 (outside USA)

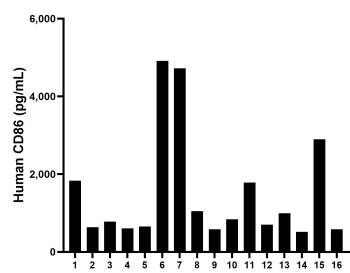
E: [proteintech@ptglab.com](mailto:proteintech@ptglab.com)  
W: [ptglab.com](http://ptglab.com)

This product is exclusively available under Proteintech Group brand and is not available to purchase from any other manufacturer.

## Selected Validation Data



Sandwich ELISA standard curve of MP50056-1, CD86 Monoclonal Matched Antibody Pair, PBS Only. Capture antibody: 68674-1-PBS. Detection antibody: 68674-2-PBS. Standard: Eg0059. Range: 78.1-5000 pg/mL.



Serum of sixteen individual healthy human donors was measured. The human CD86 concentration of detected samples was determined to be 1,506.0 pg/mL with a range of 516.7 - 4,914.5 pg/mL.