

CEA/CD66e Monoclonal Matched Antibody Pair, PBS Only

Catalog Number: **MP50057-1**

Capture Antibody Information

Catalog Number:
68675-1-PBS
Host:
Mouse
Isotype:
IgG1
Purification Method:
Protein G purification

Clone ID:
3F5F7
Reactivity:
human
Immunogen Catalog Number:
Eg0247

Conjugate:
Unconjugated
Full name:
carcinoembryonic antigen-related cell adhesion molecule 5
Gene ID:
1048

Detection Antibody Information

Catalog Number:
68675-2-PBS
Host:
Mouse
Isotype:
IgG1
Purification Method:
Protein G purification

Clone ID:
1E10A7
Reactivity:
human
GenBank:
BC034671
Immunogen Catalog Number:
Eg0247

Conjugate:
Unconjugated
Full name:
carcinoembryonic antigen-related cell adhesion molecule 5
Gene ID:
1048

Applications

Tested Applications:
Sandwich ELISA

Range:
31.25-2000 pg/mL (Sandwich ELISA)

Recommended Dilutions:
It is recommended that this reagent should be titrated in each testing system to obtain optimal results.

Product Information

MP50057-1 targets CEA/CD66e in immunoassays as a matched antibody pair. Validated in Sandwich ELISA.

Capture antibody: CEA/CD66e Monoclonal antibody, PBS Only (Capture) 68675-1-PBS (3F5F7). 100 µg. Concentration 1 mg/mL.

Detection antibody: CEA/CD66e Monoclonal antibody, PBS Only (Detector) 68675-2-PBS (1E10A7). 100 µg. Concentration 1 mg/mL.

Unconjugated mouse monoclonal antibody pair in PBS only storage buffer at a concentration of 1 mg/mL, ready for conjugation.

Matched antibody pairs are designed for use in a variety of assays and platforms that require matched antibody pairs.

Antibody use should be optimized for each application and assay.

Storage

Storage:
Store at -80°C.
Storage buffer:
PBS only

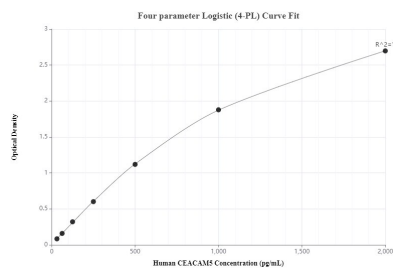
For technical support and original validation data for this product please contact:

T: 1 (888) 4PTGLAB (1-888-478-4522) (toll free in USA), or 1(312) 455-8498 (outside USA)

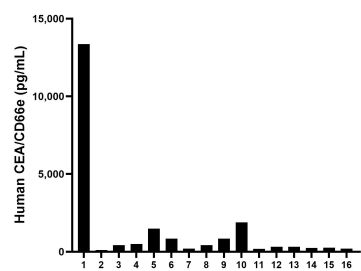
E: proteintech@ptglab.com
W: ptglab.com

This product is exclusively available under Proteintech Group brand and is not available to purchase from any other manufacturer.

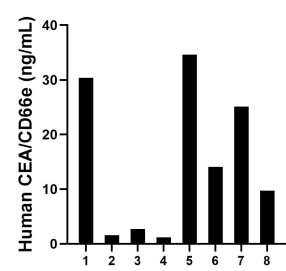
Selected Validation Data



Sandwich ELISA standard curve of MP50057-1, CEA/CEACAM5 Monoclonal Matched Antibody Pair, PBS Only. Capture antibody: 68675-1-PBS. Detection antibody: 68675-2-PBS. Standard: Eg0247. Range: 31.25-2000 pg/mL



Serum of sixteen individual healthy human donors was measured. The CEA/CD66e concentration of detected samples was determined to be 1,351.2 pg/mL with a range of 109.3-13,359.6 pg/mL



Saliva of eight individual healthy human donors was measured. The CEA/CD66e concentration of detected samples was determined to be 14.9 ng/mL with a range of 1.2-34.6 ng/mL