

# VISTA Monoclonal Matched Antibody Pair, PBS Only

Catalog Number: MP50058-1

## Capture Antibody Information

Catalog Number:  
68676-1-PBS  
Host:  
Mouse  
Isotype:  
IgG1  
Purification Method:  
Protein G purification

Clone ID:  
2B3H6  
Reactivity:  
human  
Immunogen Catalog Number:  
Eg0017

Conjugate:  
Unconjugated  
Full name:  
chromosome 10 open reading frame 54  
Gene ID:  
64115

## Detection Antibody Information

Catalog Number:  
68676-2-PBS  
Host:  
Mouse  
Isotype:  
IgG1  
Purification Method:  
Protein A purification

Clone ID:  
1D5C3  
Reactivity:  
human  
GenBank:  
BC020568  
Immunogen Catalog Number:  
Eg0017

Conjugate:  
Unconjugated  
Full name:  
chromosome 10 open reading frame 54  
Gene ID:  
64115  
Affinity:  
 $K_D = 6.58 \times 10^{-11} \text{M}$   
 $K_{Off} = 3.67 \times 10^{-6} \text{M}$   
 $K_{On} = 5.58 \times 10^4 \text{M}$

## Applications

Tested Applications:  
Sandwich ELISA

Range:  
0.156-10 ng/mL (Sandwich ELISA)

Recommended Dilutions:  
It is recommended that this reagent should be titrated in each testing system to obtain optimal results.

## Product Information

MP50058-1 targets VISTA in immunoassays as a matched antibody pair. Validated in Sandwich ELISA.

Capture antibody: VISTA Monoclonal antibody, PBS Only (Capture) 68676-1-PBS (2B3H6). 100 µg. Concentration 1 mg/mL.

Detection antibody: VISTA Monoclonal antibody, PBS Only (Detector) 68676-2-PBS (1D5C3). 100 µg. Concentration 1 mg/mL.

Unconjugated mouse monoclonal antibody pair in PBS only storage buffer at a concentration of 1 mg/mL, ready for conjugation.

Matched antibody pairs are designed for use in a variety of assays and platforms that require matched antibody pairs.

Antibody use should be optimized for each application and assay.

## Storage

Storage:  
Store at -80°C.  
Storage buffer:  
PBS only

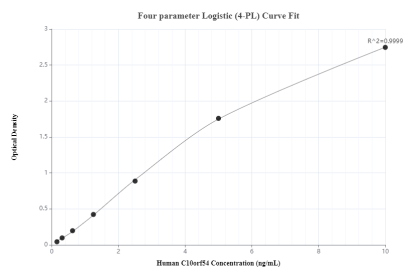
For technical support and original validation data for this product please contact:

T: 1 (888) 4PTGLAB (1-888-478-4522) (toll free in USA), or 1(312) 455-8498 (outside USA)

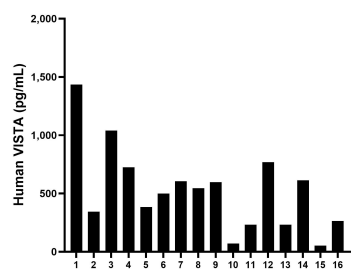
E: [proteintech@ptglab.com](mailto:proteintech@ptglab.com)  
W: [ptglab.com](http://ptglab.com)

This product is exclusively available under Proteintech Group brand and is not available to purchase from any other manufacturer.

## Selected Validation Data



Sandwich ELISA standard curve of MP50058-1, VISTA Monoclonal Matched Antibody Pair - PBS only. 68676-1-PBS was coated to a plate as the capture antibody and incubated with serial dilutions of standard Eg0017. 68676-2-PBS was HRP conjugated as the detection antibody. Range: 0.156-10 ng/mL



Serum of sixteen individual healthy human donors was measured. The VISTA concentration of detected samples was determined to be 525.25 pg/mL with a range of 52.46-1,435.23 pg/mL