

CD200 Monoclonal Matched Antibody Pair, PBS Only

Catalog Number:MP50062-1

Capture Antibody Information

Catalog Number:
68700-1-PBSHost:
MouseIsotype:
IgG1Purification Method:
Protein G purificationClone ID:
1B1C10Reactivity:
humanImmunogen Catalog Number:
Eg0006Conjugate:
UnconjugatedFull name:
CD200 moleculeGene ID:
4345

Detection Antibody Information

Catalog Number:
68700-2-PBSHost:
MouseIsotype:
IgG2bPurification Method:
Protein A purificationClone ID:
1A1B5Reactivity:
humanGenBank:
BC022522Immunogen Catalog Number:
Eg0006Conjugate:
UnconjugatedFull name:
CD200 moleculeGene ID:
4345Affinity:
 $K_D = 5.90 \times 10^{-8} \text{M}$
 $K_{Off} = 5.13 \times 10^{-3} \text{M}$
 $K_{On} = 8.70 \times 10^4 \text{M}$

Applications

Tested Applications:
Sandwich ELISARange:
31.3-2000 pg/mL (Sandwich ELISA)Recommended Dilutions:
It is recommended that this reagent should be titrated in each testing system to obtain optimal results.

Product Information

MP50062-1 targets CD200 in immunoassays as a matched antibody pair. Validated in Sandwich ELISA.

Capture antibody: CD200 Monoclonal antibody, PBS Only (Capture) 68700-1-PBS (1B1C10). 100 µg. Concentration 1 mg/mL.

Detection antibody: CD200 Monoclonal antibody, PBS Only (Detector) 68700-2-PBS (1A1B5). 100 µg. Concentration 1 mg/mL.

Unconjugated mouse monoclonal antibody pair in PBS only storage buffer at a concentration of 1 mg/mL, ready for conjugation.

Matched antibody pairs are designed for use in a variety of assays and platforms that require matched antibody pairs.

Antibody use should be optimized for each application and assay.

Storage

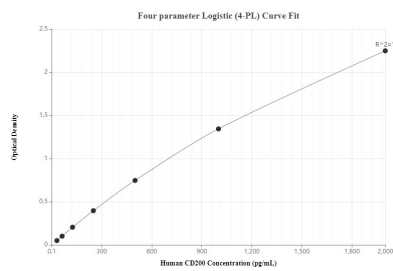
Storage:
Store at -80°C.
Storage buffer:
PBS only

For technical support and original validation data for this product please contact:

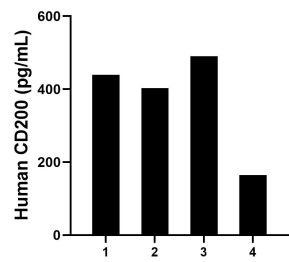
T: 1 (888) 4PTGLAB (1-888-478-4522) (toll free in USA), or 1(312) 455-8498 (outside USA)

E: proteintech@ptglab.com
W: ptglab.com**This product is exclusively available under Proteintech Group brand and is not available to purchase from any other manufacturer.**

Selected Validation Data



Sandwich ELISA standard curve of MP50062-1, CD200 Monoclonal Matched Antibody Pair - PBS only. 68700-1-PBS was coated to a plate as the capture antibody and incubated with serial dilutions of standard Eg0006. 68700-2-PBS was HRP conjugated as the detection antibody. Range: 31.3-2000 pg/mL.



Serum of four individual healthy human donors was measured. The human CD200 concentration of detected samples was determined to be 374.2 pg/mL with a range of 164.2 - 490.7 pg/mL.