

Angiotensinogen/AGT Monoclonal Matched Antibody Pair, PBS Only

Catalog Number: **MP50065-1**

Capture Antibody Information

Catalog Number:
68704-1-PBS
Host:
Mouse
Isotype:
IgG1
Purification Method:
Protein G purification

Clone ID:
2G2G7
Reactivity:
human
Immunogen Catalog Number:
Ag16658

Conjugate:
Unconjugated
Full name:
angiotensinogen (serpin peptidase inhibitor, clade A, member 8)
Gene ID:
183

Detection Antibody Information

Catalog Number:
68704-2-PBS
Host:
Mouse
Isotype:
IgG2a
Purification Method:
Protein A purification

Clone ID:
1F12H1
Reactivity:
human
GenBank:
BC011519
Immunogen Catalog Number:
Ag16658

Conjugate:
Unconjugated
Full name:
angiotensinogen (serpin peptidase inhibitor, clade A, member 8)
Gene ID:
183

Applications

Tested Applications:
Sandwich ELISA

Range:
0.156-10 ng/mL (Sandwich ELISA)

Recommended Dilutions:
It is recommended that this reagent should be titrated in each testing system to obtain optimal results.

Product Information

MP50065-1 targets Angiotensinogen/AGT in immunoassays as a matched antibody pair. Validated in Sandwich ELISA.

Capture antibody: Angiotensinogen/AGT Monoclonal antibody, PBS Only (Capture) 68704-1-PBS (2G2G7). 100 µg. Concentration 1 mg/mL.

Detection antibody: Angiotensinogen/AGT Monoclonal antibody, PBS Only (Detector) 68704-2-PBS (1F12H1). 100 µg. Concentration 1 mg/mL.

Unconjugated mouse monoclonal antibody pair in PBS only storage buffer at a concentration of 1 mg/mL, ready for conjugation.

Matched antibody pairs are designed for use in a variety of assays and platforms that require matched antibody pairs.

Antibody use should be optimized for each application and assay.

Storage

Storage:
Store at -80°C.
Storage buffer:
PBS only

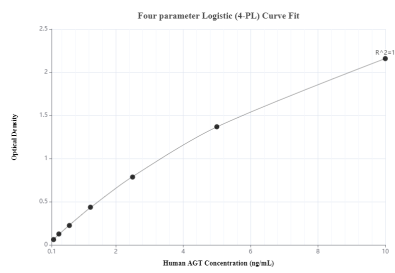
For technical support and original validation data for this product please contact:

T: 1 (888) 4PTGLAB (1-888-478-4522) (toll free in USA), or 1(312) 455-8498 (outside USA)

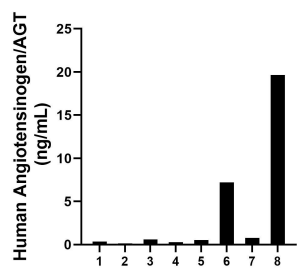
E: proteintech@ptglab.com
W: ptglab.com

This product is exclusively available under Proteintech Group brand and is not available to purchase from any other manufacturer.

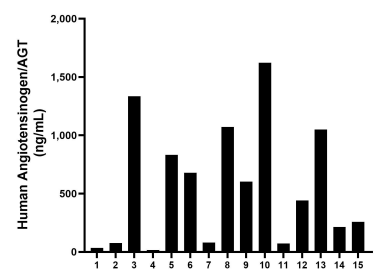
Selected Validation Data



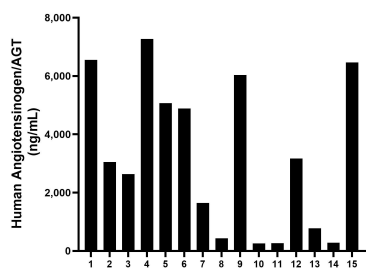
Sandwich ELISA standard curve of MP50065-1, AGT Monoclonal Matched Antibody Pair, PBS Only. Capture antibody: 68704-1-PBS. Detection antibody: 68704-2-PBS. Standard: Ag16658. Range: 0.156-10 ng/mL



Urine of eight individual healthy human donors was measured. The human Angiotensinogen/AGT concentration of detected samples was determined to be 3.70 ng/mL with a range of 0.15 - 19.67 ng/mL



Plasma of sixteen individual healthy human donors was measured. The human Angiotensinogen/AGT concentration of detected samples was determined to be 559.16 ng/mL with a range of 16.05 - 1,622.27 ng/mL



Serum of sixteen individual healthy human donors was measured. The human Angiotensinogen/AGT concentration of detected samples was determined to be 3,252.37 ng/mL with a range of 261.69 - 7,272.42 ng/mL