

EGFR Monoclonal Matched Antibody Pair, PBS Only

Catalog Number: **MP50069-1**

Capture Antibody Information

Catalog Number:
68643-1-PBS
Host:
Mouse
Isotype:
IgG1
Purification Method:
Protein G purification

Clone ID:
2C8C12
Reactivity:
human
Immunogen Catalog Number:
Ag24947

Conjugate:
Unconjugated
Full name:
epidermal growth factor receptor (erythroblastic leukemia viral (v-erb-b) oncogene homolog, avian)
Gene ID:
1956

Detection Antibody Information

Catalog Number:
68643-2-PBS
Host:
Mouse
Isotype:
IgG1
Purification Method:
Protein G purification

Clone ID:
2D8G2
Reactivity:
human
GenBank:
NM_005228.5
Immunogen Catalog Number:
Ag24947

Conjugate:
Unconjugated
Full name:
epidermal growth factor receptor (erythroblastic leukemia viral (v-erb-b) oncogene homolog, avian)
Gene ID:
1956

Applications

Tested Applications:
Sandwich ELISA

Range:
0.156-10 ng/mL (Sandwich ELISA)

Recommended Dilutions:
It is recommended that this reagent should be titrated in each testing system to obtain optimal results.

Product Information

MP50069-1 targets EGFR in immunoassays as a matched antibody pair. Validated in Sandwich ELISA.

Capture antibody: EGFR Monoclonal antibody, PBS Only (Capture) 68643-1-PBS (2C8C12). 100 µg. Concentration 1 mg/mL.

Detection antibody: EGFR Monoclonal antibody, PBS Only (Detector) 68643-2-PBS (2D8G2). 100 µg. Concentration 1 mg/mL.

Unconjugated mouse monoclonal antibody pair in PBS only storage buffer at a concentration of 1 mg/mL, ready for conjugation.

Matched antibody pairs are designed for use in a variety of assays and platforms that require matched antibody pairs.

Antibody use should be optimized for each application and assay.

Storage

Storage:
Store at -80°C.
Storage buffer:
PBS only

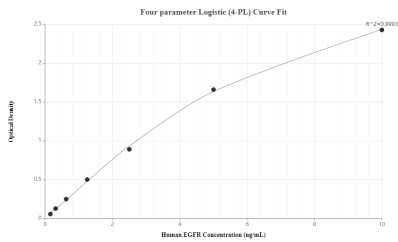
For technical support and original validation data for this product please contact:

T: 1 (888) 4PTGLAB (1-888-478-4522) (toll free in USA), or 1(312) 455-8498 (outside USA)

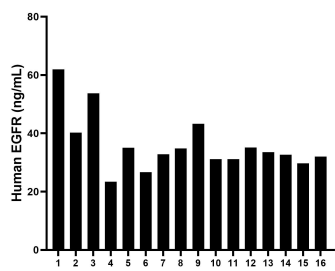
E: proteintech@ptglab.com
W: ptglab.com

This product is exclusively available under Proteintech Group brand and is not available to purchase from any other manufacturer.

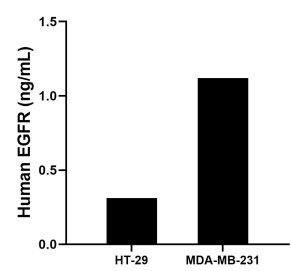
Selected Validation Data



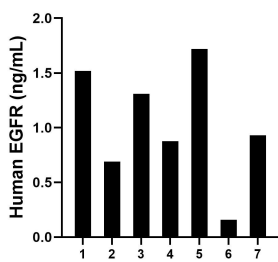
Sandwich ELISA standard curve of MP50069-1, EGFR Monoclonal Matched Antibody Pair, PBS Only. Capture antibody: 68643-1-PBS. Detection antibody: 68643-2-PBS. Standard: Eg0204. Range: 0.156-10 ng/mL



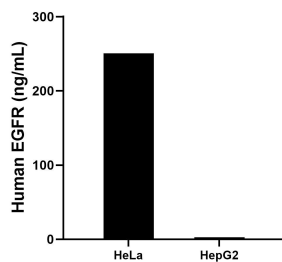
Serum of sixteen individual healthy human donors was measured. The human EGFR concentration of detected samples was determined to be 36.08 ng/mL with a range of 23.43 - 61.95 ng/mL



HT-29 and MDA-MB-231 were cultured in RPMI-1640 supplemented with 10% fetal bovine serum, 100 U/mL penicillin and 100 µg/mL streptomycin sulfate. An aliquot of the culture supernates were removed, assayed for human IDO1, and measured 0.31 ng/mL and 1.12 ng/mL



Human milk of seven individual healthy human donors was measured. The human EGFR concentration of detected samples was determined to be 1.03 ng/mL with a range of 0.16 - 1.72 ng/mL



The mean EGFR concentration was determined to be 250.71 ng/mL in HeLa cell extract based on a 4.4 mg/mL extract load and 2.64 ng/mL in HepG2 cell extract based on a 4.1 mg/mL extract load.