

For Research Use Only



TNFSF15 Monoclonal Matched Antibody Pair, PBS Only

Catalog Number:MP50070-1

Capture Antibody Information

Catalog Number:
68681-1-PBS
Host:
Mouse
Isotype:
IgG2a
Purification Method:
Protein G purification

Clone ID:
2A3F3
Reactivity:
human
Immunogen Catalog Number:
Ag30004

Conjugate:
Unconjugated
Full name:
tumor necrosis factor (ligand)
superfamily, member 15
Gene ID:
9966

Detection Antibody Information

Catalog Number:
68681-2-PBS
Host:
Mouse
Isotype:
IgG2a
Purification Method:
Protein A purification

Clone ID:
1B9F3
Reactivity:
human
GenBank:
BC074941
Immunogen Catalog Number:
Ag30004

Conjugate:
Unconjugated
Full name:
tumor necrosis factor (ligand)
superfamily, member 15
Gene ID:
9966

Applications

Tested Applications:
Sandwich ELISA

Range:
78.1-5000 pg/mL (Sandwich ELISA)

Recommended Dilutions:
It is recommended that this reagent should be titrated in each testing system to obtain optimal results.

Product Information

MP50070-1 targets TNFSF15 in immunoassays as a matched antibody pair. Validated in Sandwich ELISA.

Capture antibody: TNFSF15 Monoclonal antibody, PBS Only (Capture) 68681-1-PBS (2A3F3). 100 µg. Concentration 1 mg/mL.

Detection antibody: TNFSF15 Monoclonal antibody, PBS Only (Detector) 68681-2-PBS (1B9F3). 100 µg. Concentration 1 mg/mL.

Unconjugated mouse monoclonal antibody pair in PBS only storage buffer at a concentration of 1 mg/mL, ready for conjugation.

Matched antibody pairs are designed for use in a variety of assays and platforms that require matched antibody pairs.

Antibody use should be optimized for each application and assay.

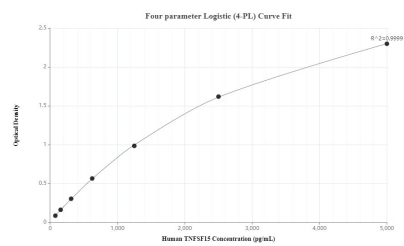
Storage

Storage:
Store at -80°C.
Storage buffer:
PBS only

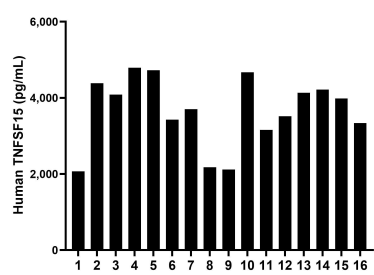
For technical support and original validation data for this product please contact:
T: 1 (888) 4PTGLAB (1-888-478-4522) (toll free in USA), or 1(312) 455-8498 (outside USA)
E: proteintech@ptglab.com
W: ptglab.com

This product is exclusively available under Proteintech Group brand and is not available to purchase from any other manufacturer.

Selected Validation Data



Sandwich ELISA standard curve of MP50070-1, TNFSF15 Monoclonal Matched Antibody Pair, PBS Only. Capture antibody: 68681-1-PBS. Detection antibody: 68681-2-PBS. Standard: Ag30004. Range: 78.1-5000 pg/mL.



Serum of sixteen individual healthy human donors was measured. The TNFSF15 concentration of detected samples was determined to be 3,657.9 pg/mL with a range of 2,074.7-4,791.6 pg/mL.