

For Research Use Only

CLU Monoclonal Matched Antibody Pair, PBS Only



Catalog Number:MP50075-1

Capture Antibody Information

Catalog Number:
68687-1-PBS
Host:
Mouse
Isotype:
IgG1
Purification Method:
Protein A purification

Clone ID:
2G4A9
Reactivity:
human
Immunogen Catalog Number:
Eg0225

Conjugate:
Unconjugated
Full name:
clusterin
Gene ID:
1191

Detection Antibody Information

Catalog Number:
68687-2-PBS
Host:
Mouse
Isotype:
IgG2a
Purification Method:
Protein A purification

Clone ID:
1F10G2
Reactivity:
human
GenBank:
BC010514
Immunogen Catalog Number:
Eg0225

Conjugate:
Unconjugated
Full name:
clusterin
Gene ID:
1191

Applications

Tested Applications:
Sandwich ELISA

Range:
0.313-20 ng/mL (Sandwich ELISA)

Recommended Dilutions:
It is recommended that this reagent should be titrated in each testing system to obtain optimal results.

Product Information

MP50075-1 targets CLU in immunoassays as a matched antibody pair. Validated in Sandwich ELISA.

Capture antibody: Clusterin Monoclonal antibody, PBS Only (Capture) 68687-1-PBS (2G4A9). 100 µg. Concentration 1 mg/mL.

Detection antibody: Clusterin Monoclonal antibody, PBS Only (Detector) 68687-2-PBS (1F10G2). 100 µg. Concentration 1 mg/mL.

Unconjugated mouse monoclonal antibody pair in PBS only storage buffer at a concentration of 1 mg/mL, ready for conjugation.

Matched antibody pairs are designed for use in a variety of assays and platforms that require matched antibody pairs.

Antibody use should be optimized for each application and assay.

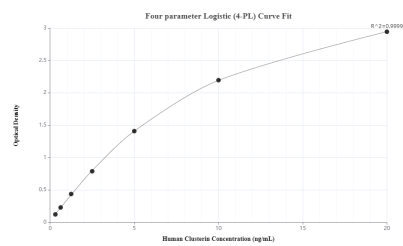
Storage

Storage:
Store at -80°C.
Storage buffer:
PBS only

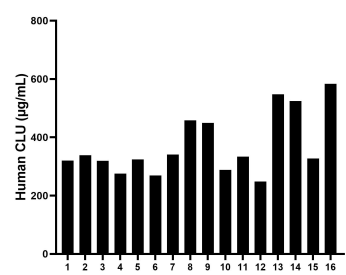
For technical support and original validation data for this product please contact:
T: 1 (888) 4PTGLAB (1-888-478-4522) (toll free in USA), or 1(312) 455-8498 (outside USA)
E: proteintech@ptglab.com
W: ptglab.com

This product is exclusively available under Proteintech Group brand and is not available to purchase from any other manufacturer.

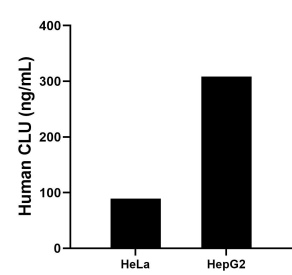
Selected Validation Data



Sandwich ELISA standard curve of MP50075-1, CLU Monoclonal Matched Antibody Pair, PBS Only. Capture antibody: 68687-1-PBS. Detection antibody: 68687-2-PBS. Standard: Eg0225. Range: 0.313-20 ng/mL



Serum of sixteen individual healthy human donors was measured. The human CLU concentration of detected samples was determined to be 371.79 µg/mL with a range of 248.44 - 583.26 µg/mL



HeLa and HepG2 were cultured in DMEM supplemented with 10% fetal bovine serum, 2.5 mM L-glutamine, 100 U/mL penicillin, and 100 µg/mL streptomycin sulfate. An aliquot of the cell culture supernate was removed, assayed for human CLU, and measured 89.23 and 308.39 ng/mL