

CD4 Monoclonal Matched Antibody Pair, PBS Only

Catalog Number: MP50077-1

Capture Antibody Information

Catalog Number:
65147-1-PBSHost:
MouseIsotype:
IgG1, kappaPurification Method:
Affinity purificationClone ID:
SK3Reactivity:
humanConjugate:
UnconjugatedFull name:
CD4 moleculeGene ID:
920
 Affinity:
 $K_D = 8.82 \times 10^{-11} \text{M}$
 $K_{Off} = 2.00 \times 10^{-5} \text{M}$
 $K_{On} = 2.26 \times 10^5 \text{M}$

Detection Antibody Information

Catalog Number:
68688-1-PBSHost:
MouseIsotype:
IgG1Purification Method:
Protein G purificationClone ID:
1E11B4Reactivity:
humanGenBank:
BC025782Immunogen Catalog Number:
Eg0333Conjugate:
UnconjugatedFull name:
CD4 moleculeGene ID:
920
 Affinity:
 $K_D = 1.39 \times 10^{-10} \text{M}$
 $K_{Off} = 4.36 \times 10^{-6} \text{M}$
 $K_{On} = 3.13 \times 10^4 \text{M}$

Applications

Tested Applications:
Sandwich ELISARange:
15.6-1000 pg/mL (Sandwich ELISA)
 Recommended Dilutions:
 It is recommended that this reagent should be titrated in each testing system to obtain optimal results.

Product Information

MP50077-1 targets CD4 in immunoassays as a matched antibody pair. Validated in Sandwich ELISA.

Capture antibody: Anti-Human CD4 (SK3), PBS Only (Capture) 65147-1-PBS (SK3). 100 µg. Concentration 1 mg/mL.

Detection antibody: CD4 Monoclonal antibody, PBS Only (Detector) 68688-1-PBS (1E11B4). 100 µg. Concentration 1 mg/mL.

Unconjugated mouse monoclonal antibody pair in PBS only storage buffer at a concentration of 1 mg/mL, ready for conjugation.

Matched antibody pairs are designed for use in a variety of assays and platforms that require matched antibody pairs.

Antibody use should be optimized for each application and assay.

Storage

 Storage:
 Store at -80°C.
 Storage buffer:
 PBS only

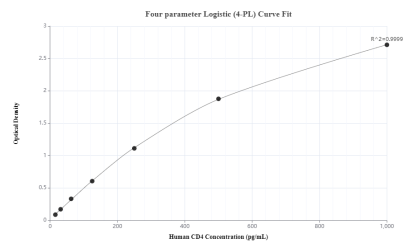
For technical support and original validation data for this product please contact:

T: 1 (888) 4PTGLAB (1-888-478-4522) (toll free in USA), or 1(312) 455-8498 (outside USA)

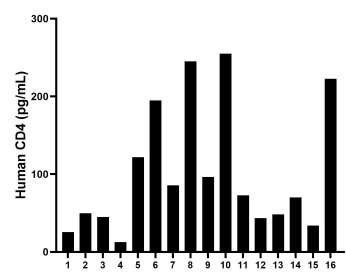
E: proteintech@ptglab.com
W: ptglab.com

This product is exclusively available under Proteintech Group brand and is not available to purchase from any other manufacturer.

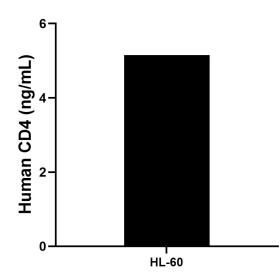
Selected Validation Data



Sandwich ELISA standard curve of MP50077-1, CD4 Monoclonal Matched Antibody Pair - PBS only. 65147-1-PBS was coated to a plate as the capture antibody and incubated with serial dilutions of standard Eg0333. 68688-1-PBS was HRP conjugated as the detection antibody. Range: 15.6-1000 pg/mL.



Serum of sixteen individual healthy human donors was measured. The human CD4 concentration of detected samples was determined to be 101.4 pg/mL with a range of 12.7 - 255.0 pg/mL.



The mean CD4 concentration was determined to be 5.16 ng/mL in HL-60 cell extract based on a 4.3 mg/mL extract load.