

For Research Use Only

APOE Monoclonal Matched Antibody Pair, PBS Only



Catalog Number:MP50078-1

Capture Antibody Information

Catalog Number:
68696-1-PBS
Host:
Mouse
Isotype:
IgG1
Purification Method:
Protein G purification

Clone ID:
1A3C5
Reactivity:
human
Immunogen Catalog Number:
Eg0448

Conjugate:
Unconjugated
Full name:
Apolipoprotein E
Gene ID:
348

Detection Antibody Information

Catalog Number:
68696-2-PBS
Host:
Mouse
Isotype:
IgG2a
Purification Method:
Protein A purification

Clone ID:
1D1C3
Reactivity:
human
GenBank:
BC003557
Immunogen Catalog Number:
Eg0448

Conjugate:
Unconjugated
Full name:
Apolipoprotein E
Gene ID:
348

Applications

Tested Applications:
Sandwich ELISA

Range:
0.156-10 ng/mL (Sandwich ELISA)

Recommended Dilutions:
It is recommended that this reagent should be titrated in each testing system to obtain optimal results.

Product Information

MP50078-1 targets APOE in immunoassays as a matched antibody pair. Validated in Sandwich ELISA.

Capture antibody: APOE Monoclonal antibody, PBS Only (Capture) 68696-1-PBS (1A3C5). 100 µg. Concentration 1 mg/mL.

Detection antibody: APOE Monoclonal antibody, PBS Only (Detector) 68696-2-PBS (1D1C3). 100 µg. Concentration 1 mg/mL.

Unconjugated mouse monoclonal antibody pair in PBS only storage buffer at a concentration of 1 mg/mL, ready for conjugation.

Matched antibody pairs are designed for use in a variety of assays and platforms that require matched antibody pairs.

Antibody use should be optimized for each application and assay.

Storage

Storage:
Store at -80°C.
Storage buffer:
PBS only

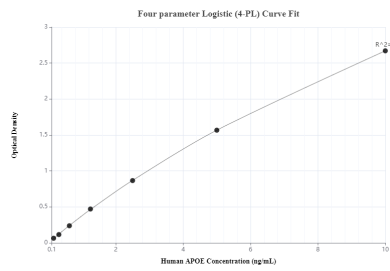
For technical support and original validation data for this product please contact:

T: 1 (888) 4PTGLAB (1-888-478-4522) (toll free in USA), or 1(312) 455-8498 (outside USA)

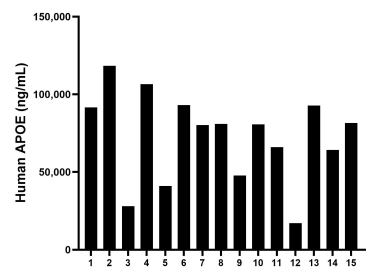
E: proteintech@ptglab.com
W: ptglab.com

This product is exclusively available under Proteintech Group brand and is not available to purchase from any other manufacturer.

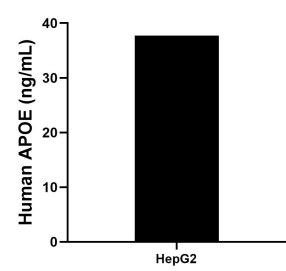
Selected Validation Data



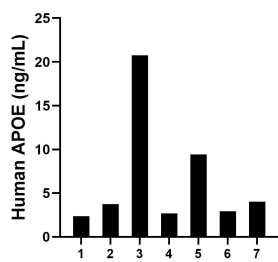
Sandwich ELISA standard curve of MP50078-1, APOE Monoclonal Matched Antibody Pair, PBS Only. Capture antibody: 68696-1-PBS. Detection antibody: 68696-2-PBS. Standard: Eg0448. Range: 0.156-10 ng/mL



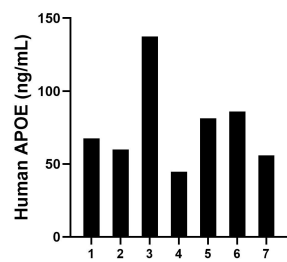
Serum of sixteen individual healthy human donors was measured. The APOE concentration of detected samples was determined to be 72,675.66 ng/mL with a range of 17,060.26-118,380.99 ng/mL



HepG2 cells were cultured in DMEM supplemented with 10% fetal bovine serum, 2 mM L-glutamine, 100 U/mL penicillin, and 100 µg/mL streptomycin sulfate. An aliquot of the cell culture supernate was removed, assayed for human APOE, and measured 37.72 ng/mL



Urine of seven individual healthy human donors was measured. The APOE concentration of detected samples was determined to be 6.56 ng/mL with a range of 2.35-20.75 ng/mL



Human milk of seven individual healthy human donors was measured. The APOE concentration of detected samples was determined to be 76.11 ng/mL with a range of 44.74-137.34 ng/mL