

Rat MMP-9 Monoclonal Matched Antibody Pair, PBS Only

Catalog Number:MP50079-1

Capture Antibody Information

Catalog Number:
68695-1-PBS
Host:
Mouse
Isotype:
IgG1
Purification Method:
Protein G purification

Clone ID:
1B1C2
Reactivity:
rat
Immunogen Catalog Number:
Eg0439

Conjugate:
Unconjugated
Full name:
matrix metalloproteinase 9
Gene ID:
81687

Detection Antibody Information

Catalog Number:
68695-3-PBS
Host:
Mouse
Isotype:
IgG1
Purification Method:
Protein G purification

Clone ID:
2C6B6
Reactivity:
rat
GenBank:
NM_031055.2
Immunogen Catalog Number:
Eg0439

Conjugate:
Unconjugated
Full name:
matrix metalloproteinase 9
Gene ID:
81687

Applications

Tested Applications:
Sandwich ELISA

Range:
62.5-4000 pg/mL (Sandwich ELISA)

Recommended Dilutions:
It is recommended that this reagent should be titrated in each testing system to obtain optimal results.

Product Information

MP50079-1 targets MMP-9 in immunoassays as a matched antibody pair. Validated in Sandwich ELISA.

Capture antibody: Rat Mmp9 Monoclonal antibody, PBS Only (Capture) 68695-1-PBS (1B1C2). 100 µg. Concentration 1 mg/mL.

Detection antibody: Rat Mmp9 Monoclonal antibody, PBS Only (Detector) 68695-3-PBS (2C6B6). 100 µg. Concentration 1 mg/mL.

Unconjugated mouse monoclonal antibody pair in PBS only storage buffer at a concentration of 1 mg/mL, ready for conjugation.

Matched antibody pairs are designed for use in a variety of assays and platforms that require matched antibody pairs.

Antibody use should be optimized for each application and assay.

Storage

Storage:
Store at -80°C.
Storage buffer:
PBS only

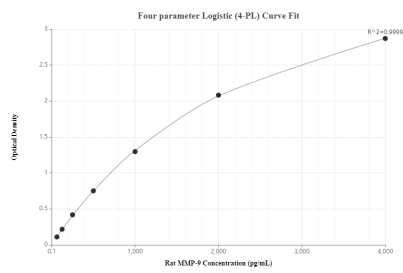
For technical support and original validation data for this product please contact:

T: 1 (888) 4PTGLAB (1-888-478-4522) (toll free in USA), or 1(312) 455-8498 (outside USA)

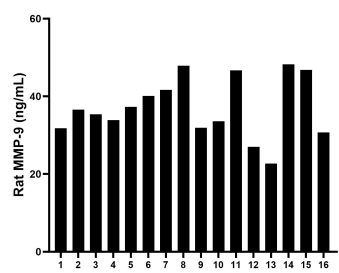
E: proteintech@ptglab.com
W: ptglab.com

This product is exclusively available under Proteintech Group brand and is not available to purchase from any other manufacturer.

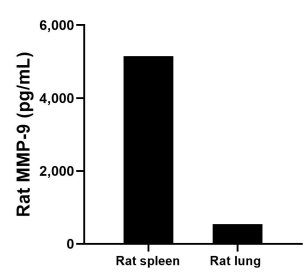
Selected Validation Data



Sandwich ELISA standard curve of MP50079-1, Rat Mmp9 Monoclonal Matched Antibody Pair, PBS Only. Capture antibody: 68695-1-PBS. Detection antibody: 68695-3-PBS. Standard: Eg0439. Range: 62.5-4000 pg/mL.



Serum of sixteen rats was measured. The MMP-9 concentration of detected samples was determined to be 37.0 ng/mL with a range of 22.7-48.2 ng/mL.



Rat spleen and lung tissues from one adult rat (chopped in 1-2 mm pieces in 30 mL of medium) were cultured in RPMI supplemented with 10% fetal bovine serum and 50 μ M β -mercaptoethanol. Aliquots of the cell culture supernates were removed, assayed for levels of rat MMP-9, and measured 5,145.7 pg/mL and 540.2 pg/mL, respectively.