

# S100A14 Monoclonal Matched Antibody Pair, PBS Only

Catalog Number: **MP50082-1**

## Capture Antibody Information

**Catalog Number:**

68690-1-PBS

**Host:**

Mouse

**Isotype:**

IgG1

**Purification Method:**

Protein A purification

**Clone ID:**

1D12A2

**Reactivity:**

human

**Immunogen Catalog Number:**

Ag29970

**Conjugate:**

Unconjugated

**Full name:**

S100 calcium binding protein A14

**Gene ID:**

57402

## Detection Antibody Information

**Catalog Number:**

68690-2-PBS

**Host:**

Mouse

**Isotype:**

IgG1

**Purification Method:**

Protein A purification

**Clone ID:**

1F9H11

**Reactivity:**

human

**GenBank:**

BC005019

**Immunogen Catalog Number:**

Ag29970

**Conjugate:**

Unconjugated

**Full name:**

S100 calcium binding protein A14

**Gene ID:**

57402

## Applications

**Tested Applications:**

Sandwich ELISA

**Range:**

0.156-10 ng/mL (Sandwich ELISA)

**Recommended Dilutions:**

It is recommended that this reagent should be titrated in each testing system to obtain optimal results.

## Product Information

MP50082-1 targets S100A14 in immunoassays as a matched antibody pair. Validated in Sandwich ELISA.

Capture antibody: S100A14 Monoclonal antibody, PBS Only (Capture) 68690-1-PBS (1D12A2). 100 µg. Concentration 1 mg/mL.

Detection antibody: S100A14 Monoclonal antibody, PBS Only (Detector) 68690-2-PBS (1F9H11). 100 µg. Concentration 1 mg/mL.

Unconjugated mouse monoclonal antibody pair in PBS only storage buffer at a concentration of 1 mg/mL, ready for conjugation.

Matched antibody pairs are designed for use in a variety of assays and platforms that require matched antibody pairs.

Antibody use should be optimized for each application and assay.

## Storage

**Storage:**

Store at -80°C.

**Storage buffer:**

PBS only

For technical support and original validation data for this product please contact:

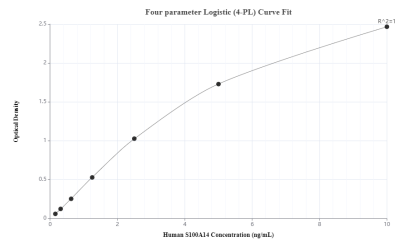
T: 1 (888) 4PTGLAB (1-888-478-4522) (toll free in USA), or 1(312) 455-8498 (outside USA)

E: [proteintech@ptglab.com](mailto:proteintech@ptglab.com)

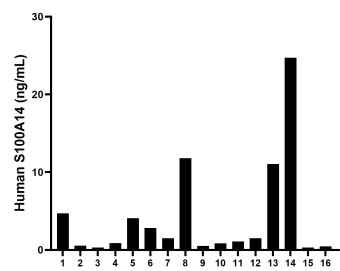
W: [ptglab.com](http://ptglab.com)

**This product is exclusively available under Proteintech Group brand and is not available to purchase from any other manufacturer.**

# Selected Validation Data



Sandwich ELISA standard curve of MP50082-1, S100A14 Monoclonal Matched Antibody Pair, PBS Only. Capture antibody: 68690-1-PBS. Detection antibody: 68690-2-PBS. Standard: Ag29970. Range: 0.156-10 ng/mL



Serum of sixteen individual healthy human donors was measured. The human S100A14 concentration of detected samples was determined to be 4.20 ng/mL with a range of 0.31 - 24.71 ng/mL