

gp130/IL6ST Monoclonal Matched Antibody Pair, PBS Only

Catalog Number: MP50086-1

Capture Antibody Information

Catalog Number:
68692-1-PBS
Host:
Mouse
Isotype:
IgG2a
Purification Method:
Protein A purification

Clone ID:
1A2A1
Reactivity:
human
Immunogen Catalog Number:
Eg0654

Conjugate:
Unconjugated
Full name:
interleukin 6 signal transducer (gp130, oncostatin M receptor)
Gene ID:
3572

Detection Antibody Information

Catalog Number:
68692-2-PBS
Host:
Mouse
Isotype:
IgG1
Purification Method:
Protein G purification

Clone ID:
1G9E1
Reactivity:
human
GenBank:
NM_002184.3
Immunogen Catalog Number:
Eg0654

Conjugate:
Unconjugated
Full name:
interleukin 6 signal transducer (gp130, oncostatin M receptor)
Gene ID:
3572

Applications

Tested Applications:
Sandwich ELISA

Range:
31.25-2000 pg/mL (Sandwich ELISA)

Recommended Dilutions:
It is recommended that this reagent should be titrated in each testing system to obtain optimal results.

Product Information

MP50086-1 targets gp130/IL6ST in immunoassays as a matched antibody pair. Validated in Sandwich ELISA.

Capture antibody: gp130/IL6ST Monoclonal antibody, PBS Only (Capture) 68692-1-PBS (1A2A1). 100 µg. Concentration 1 mg/mL.

Detection antibody: gp130/IL6ST Monoclonal antibody, PBS Only (Detector) 68692-2-PBS (1G9E1). 100 µg. Concentration 1 mg/mL.

Unconjugated mouse monoclonal antibody pair in PBS only storage buffer at a concentration of 1 mg/mL, ready for conjugation.

Matched antibody pairs are designed for use in a variety of assays and platforms that require matched antibody pairs.

Antibody use should be optimized for each application and assay.

Storage

Storage:
Store at -80°C.
Storage buffer:
PBS only

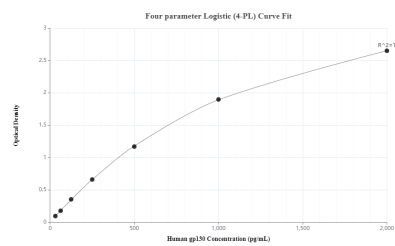
For technical support and original validation data for this product please contact:

T: 1 (888) 4PTGLAB (1-888-478-4522) (toll free in USA), or 1(312) 455-8498 (outside USA)

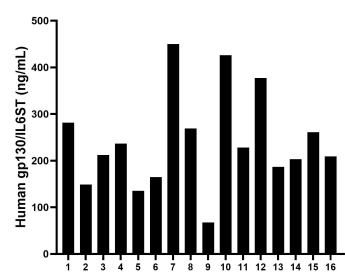
E: proteintech@ptglab.com
W: ptglab.com

This product is exclusively available under Proteintech Group brand and is not available to purchase from any other manufacturer.

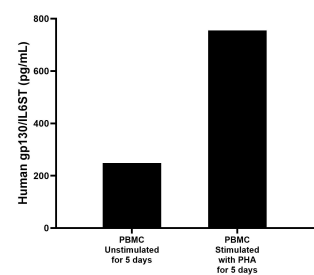
Selected Validation Data



Sandwich ELISA standard curve of MP50086-1, gp130/IL6ST Monoclonal Matched Antibody Pair, PBS Only. Capture antibody: 68692-1-PBS. Detection antibody: 68692-2-PBS. Standard: Eg0654. Range: 31.25-2000 pg/mL



Serum of sixteen individual healthy human donors was measured. The human gp130/IL6ST concentration of detected samples was determined to be 241.00 ng/mL with a range of 67.75 - 450.06 ng/mL



Human peripheral blood mononuclear cells (PBMC) were cultured unstimulated or stimulated with 10 µg/mL PHA for 5 days. The mean gp130/IL6ST concentration was determined to be 248.5 pg/mL in unstimulated PBMC supernatant, 754.8 pg/mL in PHA stimulated PBMC supernatant.