

GDF-15 Monoclonal Matched Antibody Pair, PBS Only

Catalog Number: **MP50133-3**

Capture Antibody Information

Catalog Number:

68768-3-PBS

Host:

Mouse

Isotype:

IgG1

Purification Method:

Protein G Magarose purification

Clone ID:

2B4E6

Reactivity:

human

Immunogen Catalog Number:

Ag33750

Conjugate:

Unconjugated

Full name:

growth differentiation factor 15

Gene ID:

9518

Detection Antibody Information

Catalog Number:

68768-6-PBS

Host:

Mouse

Isotype:

IgG1

Purification Method:

Protein A purification

Clone ID:

1F6E2

Reactivity:

human

GenBank:

BC008962

Immunogen Catalog Number:

Ag33750

Conjugate:

Unconjugated

Full name:

growth differentiation factor 15

Gene ID:

9518

Applications

Tested Applications:

Sandwich ELISA

Range:

1.563-100 ng/mL (Sandwich ELISA)

Recommended Dilutions:

It is recommended that this reagent should be titrated in each testing system to obtain optimal results.

Product Information

MP50133-3 targets GDF-15 in immunoassays as a matched antibody pair. Validated in Sandwich ELISA.

Capture antibody: GDF-15 Monoclonal antibody, PBS Only (Capture/Detector) 68768-3-PBS (2B4E6). 100 µg. Concentration 1 mg/mL.

Detection antibody: GDF-15 Monoclonal antibody, PBS Only (Capture/Detector) 68768-6-PBS (1F6E2). 100 µg. Concentration 1 mg/mL.

Unconjugated mouse monoclonal antibody pair in PBS only storage buffer at a concentration of 1 mg/mL, ready for conjugation.

Matched antibody pairs are designed for use in a variety of assays and platforms that require matched antibody pairs.

Antibody use should be optimized for each application and assay.

Storage

Storage:

Store at -80°C.

Storage buffer:

PBS only

For technical support and original validation data for this product please contact:

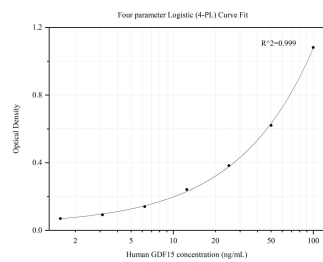
T: 1 (888) 4PTGLAB (1-888-478-4522) (toll free in USA), or 1(312) 455-8498 (outside USA)

E: proteintech@ptglab.com

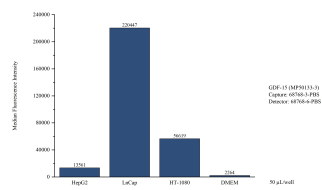
W: ptglab.com

This product is exclusively available under Proteintech Group brand and is not available to purchase from any other manufacturer.

Selected Validation Data



Sandwich ELISA standard curve of MP50133-3, GDF15 Monoclonal Matched Antibody Pair, PBS Only. Capture antibody: 68768-3-PBS. Detection antibody: HRP-conjugated 68768-6-PBS. Standard:ag33750. Range: 1.563-100 ng/mL.



Cytometric bead array of cell line supernatant using MP50133-3, GDF-15 Monoclonal Matched Antibody Pair, PBS Only. Capture antibody: 68768-3-PBS. Detection antibody: 68768-6-PBS. Supernatant (50 μ L/well) from the following cell lines were assayed: HepG2, LnCap, HT-1080. Complete culture medium was served as blank control.