

GDF-15 Monoclonal Matched Antibody Pair, PBS Only

Catalog Number: **MP50133-6**

Capture Antibody Information

Catalog Number:
68768-3-PBS

Host:
Mouse

Isotype:
IgG1

Purification Method:
Protein G Magarose purification

Clone ID:
2B4E6

Reactivity:
human

Immunogen Catalog Number:
Ag33750

Conjugate:
Unconjugated

Full name:
growth differentiation factor 15

Gene ID:
9518

Detection Antibody Information

Catalog Number:
68768-2-PBS

Host:
Mouse

Isotype:
IgG1

Purification Method:
Protein A purification

Clone ID:
1B5D12

Reactivity:
human

GenBank:
BC008962

Immunogen Catalog Number:
Ag33750

Conjugate:
Unconjugated

Full name:
growth differentiation factor 15

Gene ID:
9518

Applications

Tested Applications:
Sandwich ELISA

Range:
1.563–100 ng/mL (Sandwich ELISA)

Recommended Dilutions:
It is recommended that this reagent should be titrated in each testing system to obtain optimal results.

Product Information

MP50133-6 targets GDF-15 in immunoassays as a matched antibody pair. Validated in Sandwich ELISA.

Capture antibody: GDF-15 Monoclonal antibody, PBS Only (Capture/Detector) 68768-3-PBS (2B4E6). 100 µg. Concentration 1 mg/mL.

Detection antibody: GDF15 Monoclonal antibody, PBS Only (Capture/Detector) 68768-2-PBS (1B5D12). 100 µg. Concentration 1 mg/mL.

Unconjugated mouse monoclonal antibody pair in PBS only storage buffer at a concentration of 1 mg/mL, ready for conjugation.

Matched antibody pairs are designed for use in a variety of assays and platforms that require matched antibody pairs.

Antibody use should be optimized for each application and assay.

Storage

Storage:
Store at -80°C.
Storage buffer:
PBS only

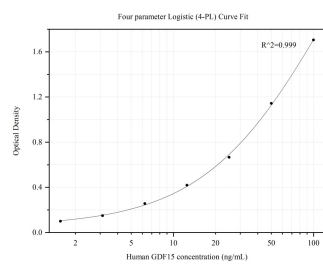
For technical support and original validation data for this product please contact:

T: 1 (888) 4PTGLAB (1-888-478-4522) (toll free in USA), or 1(312) 455-8498 (outside USA)

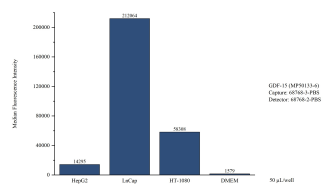
E: proteintech@ptglab.com
W: ptglab.com

This product is exclusively available under Proteintech Group brand and is not available to purchase from any other manufacturer.

Selected Validation Data



Sandwich ELISA standard curve of MP50133-6, GDF15 Monoclonal Matched Antibody Pair, PBS Only. Capture antibody: 68768-3-PBS. Detection antibody: HRP-conjugated 68768-2-PBS. Standard:ag33750. Range: 1.563-100 ng/mL.



Cytometric bead array of cell line supernatant using MP50133-6, GDF-15 Monoclonal Matched Antibody Pair, PBS Only. Capture antibody: 68768-3-PBS. Detection antibody: 68768-2-PBS. Supernatant (50µL/well) from the following cell lines were assayed: HepG2, LnCap, HT-1080. Complete culture medium was served as blank control.