

For Research Use Only

BMP-7 Monoclonal Matched Antibody Pair, PBS Only



Catalog Number:MP50138-1

Capture Antibody Information

Catalog Number:
68772-1-PBS
Host:
Mouse
Isotype:
IgG1
Purification Method:
Protein G purification

Clone ID:
1A7C1
Reactivity:
human
Immunogen Catalog Number:
HZ-1229

Conjugate:
Unconjugated
Full name:
bone morphogenetic protein 7
Gene ID:
655

Detection Antibody Information

Catalog Number:
68772-2-PBS
Host:
Mouse
Isotype:
IgG1
Purification Method:
Protein G purification

Clone ID:
3E10E2
Reactivity:
human
GenBank:
Immunogen Catalog Number:
HZ-1229

Conjugate:
Unconjugated
Full name:
bone morphogenetic protein 7
Gene ID:
655

Applications

Tested Applications:
Cytometric bead array

Range:
3.125-100 ng/mL (Cytometric Bead Array)

Recommended Dilutions:
It is recommended that this reagent should be titrated in each testing system to obtain optimal results.

Product Information

MP50138-1 targets BMP-7 in immunoassays as a matched antibody pair. Validated in Cytometric bead array.

Capture antibody: BMP-7 Monoclonal antibody, PBS Only (Capture) 68772-1-PBS (1A7C1). 100 µg. Concentration 1 mg/mL.

Detection antibody: BMP-7 Monoclonal antibody, PBS Only (Detector) 68772-2-PBS (3E10E2). 100 µg. Concentration 1 mg/mL.

Unconjugated mouse monoclonal antibody pair in PBS only storage buffer at a concentration of 1 mg/mL, ready for conjugation.

Matched antibody pairs are designed for use in a variety of assays and platforms that require matched antibody pairs.

Antibody use should be optimized for each application and assay.

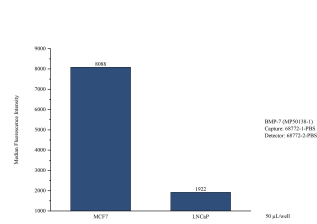
Storage

Storage:
Store at -80°C.
Storage buffer:
PBS only

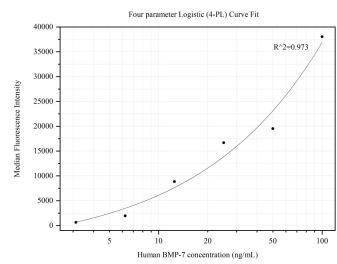
For technical support and original validation data for this product please contact:
T: 1 (888) 4PTGLAB (1-888-478-4522) (toll free in USA), or 1(312) 455-8498 (outside USA)
E: proteintech@ptglab.com
W: ptglab.com

This product is exclusively available under Proteintech Group brand and is not available to purchase from any other manufacturer.

Selected Validation Data



Cytometric bead array of cell line supernatant using MP50138-1, BMP-7 Monoclonal Matched Antibody Pair, PBS Only. Capture antibody: 68772-1-PBS. Detection antibody: 68772-2-PBS. Supernatant (50µL/well) from the following cell lines were assayed: MCF-7, LNCaP.



Cytometric bead array standard curve of MP50138-1, BMP-7 Monoclonal Matched Antibody Pair, PBS Only. Capture antibody: 68772-1-PBS. Detection antibody: 68772-2-PBS. Standard:HZ-1229. Range: 3.125-100 ng/mL