

Vimentin Monoclonal Matched Antibody Pair, PBS Only

Catalog Number: **MP50158-1**

Capture Antibody Information

Catalog Number:
60330-2-PBS

Host:
Mouse

Isotype:
IgG1

Purification Method:
Protein G purification

Clone ID:
1F9D8

Reactivity:
human

Immunogen Catalog Number:
Ag0489

Conjugate:
Unconjugated

Full name:
vimentin

Gene ID:
7431

Detection Antibody Information

Catalog Number:
60330-1-PBS

Host:
Mouse

Isotype:
IgG1

Purification Method:
Protein A purification

Clone ID:
3H9D1

Reactivity:
human, mouse, rat

GenBank:
BC000163

Immunogen Catalog Number:
Ag0489

Conjugate:
Unconjugated

Full name:
vimentin

Gene ID:
7431

Applications

Tested Applications:

Cytometric bead array, Sandwich
ELISA

Range:

3.125-100 ng/mL (Cytometric Bead
Array)
0.391-25 ng/mL (Sandwich ELISA)

Recommended Dilutions:

It is recommended that this reagent
should be titrated in each testing
system to obtain optimal results.

Product Information

MP50158-1 targets Vimentin in immunoassays as a matched antibody pair. Validated in Cytometric bead array, Sandwich ELISA.

Capture antibody: Vimentin Monoclonal antibody, PBS Only (Capture) 60330-2-PBS (1F9D8). 100 µg. Concentration 1 mg/mL.

Detection antibody: Vimentin Monoclonal antibody, PBS Only (Detector) 60330-1-PBS (3H9D1). 100 µg. Concentration 1 mg/mL.

Unconjugated mouse monoclonal antibody pair in PBS only storage buffer at a concentration of 1 mg/mL, ready for conjugation.

Matched antibody pairs are designed for use in a variety of assays and platforms that require matched antibody pairs.

Antibody use should be optimized for each application and assay.

Storage

Storage:

Store at -80°C.

Storage buffer:

PBS only

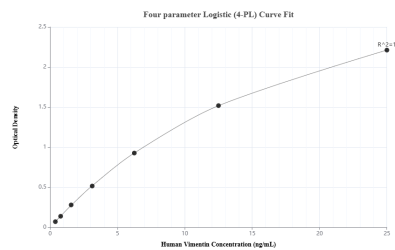
For technical support and original validation data for this product please contact:

T: 1 (888) 4PTGLAB (1-888-478-4522) (toll free
in USA), or 1(312) 455-8498 (outside USA)

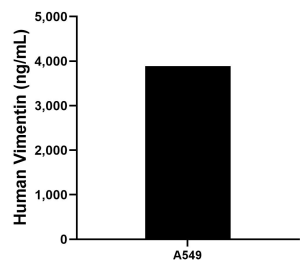
E: proteintech@ptglab.com
W: ptglab.com

This product is exclusively available under Proteintech Group brand and is not available to purchase from any other manufacturer.

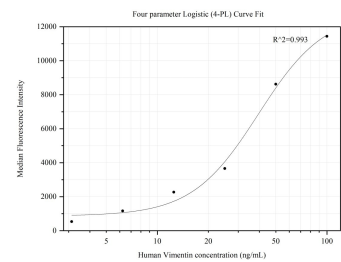
Selected Validation Data



Sandwich ELISA standard curve of MP50158-1, Human Vimentin Monoclonal Matched Antibody Pair - PBS only. 60330-2-PBS was coated to a plate as the capture antibody and incubated with serial dilutions of standard Ag0489. 60330-1-PBS was HRP conjugated as the detection antibody. Range: 0.391-25 ng/mL



The mean Vimentin concentration was determined to be 3,886.65 ng/mL in A549 cell extract based on a 2.6 mg/mL extract load.



Cytometric bead array standard curve of MP50158-1, Vimentin Monoclonal Matched Antibody Pair, PBS Only. Capture antibody: 60330-2-PBS. Detection antibody: 60330-1-PBS. Standard: ag0489. Range: 3.125-100 ng/mL