

For Research Use Only

# Phospho-MEK1 (Thr386) Monoclonal Matched Antibody Pair, PBS Only



Catalog Number:MP50180-1

## Capture Antibody Information

**Catalog Number:**  
67872-1-PBS  
**Host:**  
Mouse  
**Isotype:**  
IgG1  
**Purification Method:**  
Protein G purification

**Clone ID:**  
3F6D7  
**Reactivity:**  
human, mouse, rat

**Conjugate:**  
Unconjugated  
**Full name:**  
mitogen-activated protein kinase kinase 1  
**Gene ID:**  
5604

## Detection Antibody Information

**Catalog Number:**  
68015-1-PBS  
**Host:**  
Mouse  
**Isotype:**  
IgG1  
**Purification Method:**  
Protein G purification

**Clone ID:**  
1G6A2  
**Reactivity:**  
human, mouse  
**GenBank:**  
BC139729

**Conjugate:**  
Unconjugated  
**Full name:**  
mitogen-activated protein kinase kinase 1  
**Gene ID:**  
5604

## Applications

**Tested Applications:**  
Cytometric bead array

**Range:**  
N/A (Cytometric Bead Array)

**Recommended Dilutions:**  
It is recommended that this reagent should be titrated in each testing system to obtain optimal results.

## Product Information

MP50180-1 targets Phospho-MEK1 (Thr386) in immunoassays as a matched antibody pair. Validated in Cytometric bead array.

Capture antibody: MEK1 Monoclonal antibody, PBS Only (Capture) 67872-1-PBS (3F6D7). 100 µg. Concentration 1 mg/ml.

Detection antibody: Phospho-MEK1 (Thr386) Monoclonal antibody, PBS Only (Detector) 68015-1-PBS (1G6A2). 100 µg. Concentration 1 mg/ml.

Unconjugated mouse monoclonal antibody pair in PBS only storage buffer at a concentration of 1 mg/mL, ready for conjugation.

Matched antibody pairs are designed for use in a variety of assays and platforms that require matched antibody pairs.

Antibody use should be optimized for each application and assay.

## Storage

**Storage:**  
Store at -80°C.  
**Storage buffer:**  
PBS only

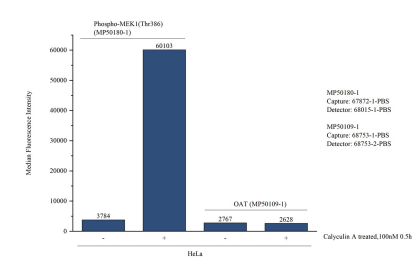
For technical support and original validation data for this product please contact:

T: 1 (888) 4PTGLAB (1-888-478-4522) (toll free in USA), or 1(312) 455-8498 (outside USA)

E: [proteintech@ptglab.com](mailto:proteintech@ptglab.com)  
W: [ptglab.com](http://ptglab.com)

This product is exclusively available under Proteintech Group brand and is not available to purchase from any other manufacturer.

# Selected Validation Data



Cytometric bead array in cell lysate using MP50180-1, Phospho-MEK1 (Thr386) Monoclonal Matched Antibody Pair, PBS Only. Capture antibody: 67872-1-PBS. Detection antibody: 68015-1-PBS. Cell lysate: Non-treated HeLa and Calyculin A treated HeLa (30µg/well). Non-related target OAT Monoclonal Matched Antibody Pair (MP50109-1P) was served as control.