

For Research Use Only

Phospho-EIF2S1 (Ser51) Monoclonal Matched Antibody Pair, PBS Only



Catalog Number:MP50181-1

Capture Antibody Information

Catalog Number:
68479-1-PBS
Host:
Mouse
Isotype:
IgG1
Purification Method:
Protein G purification

Clone ID:
3C8E2
Reactivity:
human, mouse, rat
Immunogen Catalog Number:
Ag28309

Conjugate:
Unconjugated
Full name:
eukaryotic translation initiation factor 2, subunit 1 alpha, 35kDa
Gene ID:
1965

Detection Antibody Information

Catalog Number:
68023-1-PBS
Host:
Mouse
Isotype:
IgG1
Purification Method:
Protein G purification

Clone ID:
1A4A11
Reactivity:
human, mouse, rat
GenBank:
NM_004094

Conjugate:
Unconjugated
Full name:
eukaryotic translation initiation factor 2, subunit 1 alpha, 35kDa
Gene ID:
1965

Applications

Tested Applications:
Cytometric bead array

Range:
N/A (Cytometric Bead Array)

Recommended Dilutions:
It is recommended that this reagent should be titrated in each testing system to obtain optimal results.

Product Information

MP50181-1 targets Phospho-EIF2S1 (Ser51) in immunoassays as a matched antibody pair. Validated in Cytometric bead array.

Capture antibody: EIF2S1 Monoclonal antibody, PBS Only (Capture) 68479-1-PBS (3C8E2). 100 µg. Concentration 1 mg/ml.

Detection antibody: Phospho-EIF2S1 (Ser51) Monoclonal antibody, PBS Only (Detector) 68023-1-PBS (1A4A11). 100 µg. Concentration 1 mg/ml.

Unconjugated mouse monoclonal antibody pair in PBS only storage buffer at a concentration of 1 mg/mL, ready for conjugation.

Matched antibody pairs are designed for use in a variety of assays and platforms that require matched antibody pairs.

Antibody use should be optimized for each application and assay.

Storage

Storage:
Store at -80°C.
Storage buffer:
PBS only

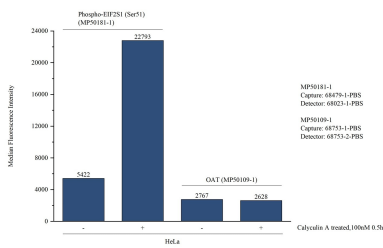
For technical support and original validation data for this product please contact:

T: 1 (888) 4PTGLAB (1-888-478-4522) (toll free in USA), or 1(312) 455-8498 (outside USA)

E: proteintech@ptglab.com
W: ptglab.com

This product is exclusively available under Proteintech Group brand and is not available to purchase from any other manufacturer.

Selected Validation Data



Cytometric bead array in cell lysate using MP50181-1, Phospho-EIF2S1 (Ser51) Monoclonal Matched Antibody Pair, PBS Only. Capture antibody: 68479-1-PBS. Detection antibody: 68023-1-PBS. Cell lysate: Non-treated HeLa and Calyculin A treated HeLa (30µg/well). Non-related target OAT Monoclonal Matched Antibody Pair (MP50109-1P) was served as control.