

For Research Use Only

# Phospho-P53 (Ser15) Monoclonal Matched Antibody Pair, PBS Only



Catalog Number:MP50182-1

## Capture Antibody Information

Catalog Number:  
67826-1-PBS  
Host:  
Mouse  
Isotype:  
IgG1  
Purification Method:  
Protein A purification

Clone ID:  
1H6G1  
Reactivity:  
human

Conjugate:  
Unconjugated  
Full name:  
tumor protein p53  
Gene ID:  
7157

## Detection Antibody Information

Catalog Number:  
60283-2-PBS  
Host:  
Mouse  
Isotype:  
IgG2b  
Purification Method:  
Protein A purification

Clone ID:  
6C4B6  
Reactivity:  
human, rat  
GenBank:  
BC003596  
Immunogen Catalog Number:  
Ag0698

Conjugate:  
Unconjugated  
Full name:  
tumor protein p53  
Gene ID:  
7157

## Applications

Tested Applications:  
Cytometric bead array

Range:  
N/A (Cytometric Bead Array)

Recommended Dilutions:  
It is recommended that this reagent should be titrated in each testing system to obtain optimal results.

## Product Information

MP50182-1 targets Phospho-P53 (Ser15) in immunoassays as a matched antibody pair. Validated in Cytometric bead array.

Capture antibody: Phospho-P53 (Ser15) Monoclonal antibody, PBS Only (Capture) 67826-1-PBS (1H6G1). 100 µg. Concentration 1 mg/ml.

Detection antibody: P53 Monoclonal antibody, PBS Only (Capture/Detector) 60283-2-PBS (6C4B6). 100 µg. Concentration 1 mg/ml.

Unconjugated mouse monoclonal antibody pair in PBS only storage buffer at a concentration of 1 mg/mL, ready for conjugation.

Matched antibody pairs are designed for use in a variety of assays and platforms that require matched antibody pairs.

Antibody use should be optimized for each application and assay.

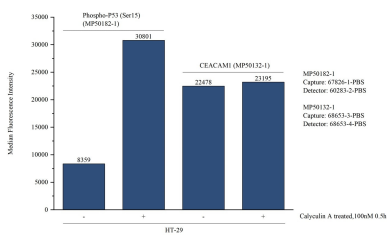
## Storage

Storage:  
Store at -80°C.  
Storage buffer:  
PBS only

For technical support and original validation data for this product please contact:  
T: 1 (888) 4PTGLAB (1-888-478-4522) (toll free in USA), or 1(312) 455-8498 (outside USA)  
E: [proteintech@ptglab.com](mailto:proteintech@ptglab.com)  
W: [ptglab.com](http://ptglab.com)

This product is exclusively available under Proteintech Group brand and is not available to purchase from any other manufacturer.

# Selected Validation Data



Cytometric bead array in cell lysate using MP50182-1, Phospho-P53 (Ser15) Monoclonal Matched Antibody Pair, PBS Only. Capture antibody: 67826-1-PBS. Detection antibody: 60283-2-PBS. Cell lysate: Non-treated HT-29 and Calyculin A treated HT-29 (30µg/well). Non-related target CEACAM1 Monoclonal Matched Antibody Pair (MP50132-1) was served as control.