

For Research Use Only

CD68 Monoclonal Matched Antibody Pair, PBS Only



Catalog Number:MP50230-2

Capture Antibody Information

Catalog Number:
66231-1-PBS

Host:
Mouse

Isotype:
IgG1

Purification Method:
Protein A purification

Clone ID:
3F10E11

Reactivity:
human, mouse

Immunogen Catalog Number:
Ag22815

Conjugate:
Unconjugated

Full name:
CD68 molecule

Gene ID:
968

Detection Antibody Information

Catalog Number:
66231-4-PBS

Host:
Mouse

Isotype:
IgG1

Purification Method:
Protein G Magarose purification

Clone ID:
3E11F10

Reactivity:
Human

GenBank:
BC015557

Immunogen Catalog Number:
Ag22815

Conjugate:
Unconjugated

Full name:
CD68 molecule

Gene ID:
968

Applications

Tested Applications:
Cytometric bead array

Range:
0.391-50 ng/mL (Cytometric Bead Array)

Recommended Dilutions:
It is recommended that this reagent should be titrated in each testing system to obtain optimal results.

Product Information

MP50230-2 targets CD68 in immunoassays as a matched antibody pair. Validated in Cytometric bead array.

Capture antibody: CD68 Monoclonal antibody, PBS Only (Capture) 66231-1-PBS (3F10E11). 100 µg. Concentration 1 mg/ml.

Detection antibody: CD68 Monoclonal antibody, PBS Only (Detector) 66231-4-PBS (3E11F10). 100 µg. Concentration 1 mg/ml.

Alternative CD68 matched antibody pairs: MP00015-1, MP00015-2, MP00015-3, MP50230-1

Unconjugated mouse monoclonal antibody pair in PBS only storage buffer at a concentration of 1 mg/mL, ready for conjugation.

Matched antibody pairs are designed for use in a variety of assays and platforms that require matched antibody pairs.

Antibody use should be optimized for each application and assay.

Storage

Storage:
Store at -80°C.
Storage buffer:
PBS only

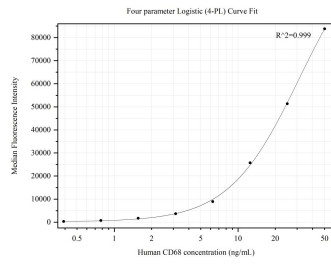
For technical support and original validation data for this product please contact:

T: 1 (888) 4PTGLAB (1-888-478-4522) (toll free in USA), or 1(312) 455-8498 (outside USA)

E: proteintech@ptglab.com
W: ptglab.com

This product is exclusively available under Proteintech Group brand and is not available to purchase from any other manufacturer.

Selected Validation Data



Cytometric bead array standard curve of MP50230-2, CD68 Monoclonal Matched Antibody Pair, PBS Only. Capture antibody: 66231-1-PBS. Detection antibody: 66231-4-PBS. Standard: Ag22815. Range: 0.391-50 ng/mL