

MSH2 Monoclonal Matched Antibody Pair, PBS Only

Catalog Number: **MP50235-1**

Capture Antibody Information

Catalog Number:
60161-1-PBS
Host:
Mouse
Isotype:
IgG1
Purification Method:
Protein A purification

Clone ID:
2H5F5
Reactivity:
human
Immunogen Catalog Number:
Ag7835

Conjugate:
Unconjugated
Full name:
mutS homolog 2, colon cancer, nonpolyposis type 1 (E. coli)
Gene ID:
4436

Detection Antibody Information

Catalog Number:
60161-2-PBS
Host:
Mouse
Isotype:
IgG2a
Purification Method:
Protein A Magarose purification

Clone ID:
2E4A7
Reactivity:
human
GenBank:
BC021566
Immunogen Catalog Number:
Ag7835

Conjugate:
Unconjugated
Full name:
mutS homolog 2, colon cancer, nonpolyposis type 1 (E. coli)
Gene ID:
4436

Applications

Tested Applications:
Cytometric bead array, Sandwich ELISA

Range:
0.781-100 ng/mL (Cytometric Bead Array)
0.781-50 ng/mL (Sandwich ELISA)

Recommended Dilutions:
It is recommended that this reagent should be titrated in each testing system to obtain optimal results.

Product Information

MP50235-1 targets MSH2 in immunoassays as a matched antibody pair. Validated in Cytometric bead array, Sandwich ELISA.

Capture antibody: MSH2 Monoclonal antibody, PBS Only (Capture) 60161-1-PBS (2H5F5). 100 µg. Concentration 1 mg/mL.

Detection antibody: MSH2 Monoclonal antibody, PBS Only (Capture/Detector) 60161-2-PBS (2E4A7). 100 µg. Concentration 1 mg/mL.

Unconjugated mouse monoclonal antibody pair in PBS only storage buffer at a concentration of 1 mg/mL, ready for conjugation.

Matched antibody pairs are designed for use in a variety of assays and platforms that require matched antibody pairs.

Antibody use should be optimized for each application and assay.

Storage

Storage:
Store at -80°C.
Storage buffer:
PBS only

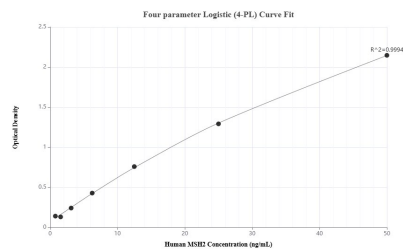
For technical support and original validation data for this product please contact:

T: 1 (888) 4PTGLAB (1-888-478-4522) (toll free in USA), or 1(312) 455-8498 (outside USA)

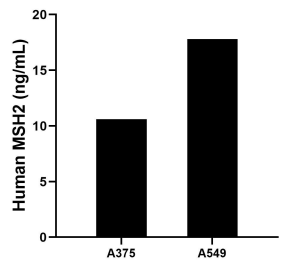
E: proteintech@ptglab.com
W: ptglab.com

This product is exclusively available under Proteintech Group brand and is not available to purchase from any other manufacturer.

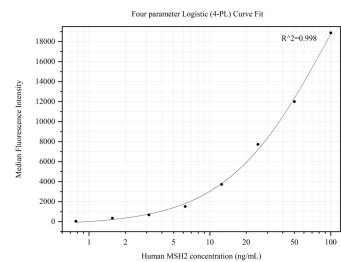
Selected Validation Data



Sandwich ELISA standard curve of MP50235-1, Human MSH2 Monoclonal Matched Antibody Pair - PBS only. 60161-1-PBS was coated to a plate as the capture antibody and incubated with serial dilutions of standard Ag7835. 60161-2-PBS was HRP conjugated as the detection antibody. Range: 0.781-50 ng/mL



The mean MSH2 concentration was determined to be 10.60 ng/mL in A375 cell extract based on a 2.0 mg/mL extract load and 17.80 ng/mL in A549 cell extract based on a 2.6 mg/mL extract load.



Cytometric bead array standard curve of MP50235-1, MSH2 Monoclonal Matched Antibody Pair, PBS Only. Capture antibody: 60161-1-PBS. Detection antibody: 60161-2-PBS. Standard: Ag7835. Range: 0.781-100 ng/mL