

ADAR1 Monoclonal Matched Antibody Pair, PBS Only

Catalog Number: **MP50240-2**

Capture Antibody Information

Catalog Number:
68850-2-PBS

Host:
Mouse

Isotype:
IgG1

Purification Method:
Protein G purification

Clone ID:
3A1C7

Reactivity:
human

Immunogen Catalog Number:
Ag5609

Conjugate:
Unconjugated

Full name:
adenosine deaminase, RNA-specific

Gene ID:
103

Detection Antibody Information

Catalog Number:
68850-3-PBS

Host:
Mouse

Isotype:
IgG2a

Purification Method:
Protein A purification

Clone ID:
1A8F7

Reactivity:
human

GenBank:
BC038227

Immunogen Catalog Number:
Ag5609

Conjugate:
Unconjugated

Full name:
adenosine deaminase, RNA-specific

Gene ID:
103

Applications

Tested Applications:

Cytometric bead array, Sandwich
ELISA

Range:

0.781-100 ng/mL (Cytometric Bead
Array)
3.13-200 ng/mL (Sandwich ELISA)

Recommended Dilutions:

It is recommended that this reagent
should be titrated in each testing
system to obtain optimal results.

Product Information

MP50240-2 targets ADAR1 in immunoassays as a matched antibody pair. Validated in Cytometric bead array, Sandwich ELISA.

Capture antibody: ADAR1 Monoclonal antibody, PBS Only (Capture/Detector) 68850-2-PBS (3A1C7). 100 µg. Concentration 1 mg/mL.

Detection antibody: ADAR1 Monoclonal antibody, PBS Only (Detector) 68850-3-PBS (1A8F7). 100 µg. Concentration 1 mg/mL.

Unconjugated mouse monoclonal antibody pair in PBS only storage buffer at a concentration of 1 mg/mL, ready for conjugation.

Matched antibody pairs are designed for use in a variety of assays and platforms that require matched antibody pairs.

Antibody use should be optimized for each application and assay.

Storage

Storage:

Store at -80°C.

Storage buffer:

PBS only

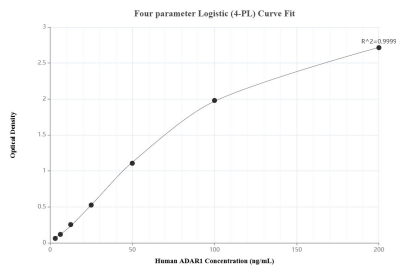
For technical support and original validation data for this product please contact:

T: 1 (888) 4PTGLAB (1-888-478-4522) (toll free
in USA), or 1(312) 455-8498 (outside USA)

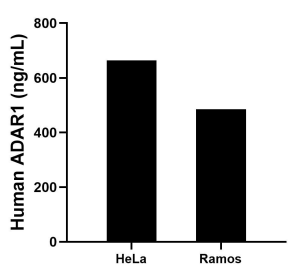
E: proteintech@ptglab.com
W: ptglab.com

This product is exclusively available under Proteintech Group brand and is not available to purchase from any other manufacturer.

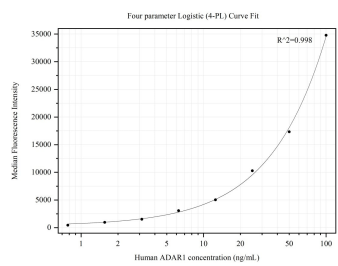
Selected Validation Data



Sandwich ELISA standard curve of MP50240-2, Human ADAR1 Monoclonal Matched Antibody Pair - PBS only. 68850-2-PBS was coated to a plate as the capture antibody and incubated with serial dilutions of standard Ag5609. 68850-3-PBS was HRP conjugated as the detection antibody. Range: 3.13-200 ng/mL



The mean ADAR1 concentration was determined to be 664.42 ng/mL in HeLa cell extract based on a 1.5 mg/mL extract load and 485.52 ng/mL in Ramos cell extract based on a 1.4 mg/mL extract load.



Cytometric bead array standard curve of MP50240-2, ADAR1 Monoclonal Matched Antibody Pair, PBS Only. Capture antibody: 68850-2-PBS. Detection antibody: 68850-3-PBS. Standard: Ag5609. Range: 0.781-100 ng/mL