

Cytokeratin 7 Monoclonal Matched Antibody Pair, PBS Only

Catalog Number: **MP50253-1**

Capture Antibody Information

Catalog Number:

68859-1-PBS

Host:

Mouse

Isotype:

IgG1

Purification Method:

Protein G Magarose purification

Clone ID:

3D4A7

Reactivity:

human

Immunogen Catalog Number:

Ag17703

Conjugate:

Unconjugated

Full name:

keratin 7

Gene ID:

3855

Detection Antibody Information

Catalog Number:

68859-2-PBS

Host:

Mouse

Isotype:

IgG1

Purification Method:

Protein G purification

Clone ID:

2C11G9

Reactivity:

human

GenBank:

BC002700

Immunogen Catalog Number:

Ag17703

Conjugate:

Unconjugated

Full name:

keratin 7

Gene ID:

3855

Applications

Tested Applications:

Cytometric bead array, Sandwich ELISA

Range:

1.563-200 ng/mL (Cytometric Bead Array)
0.781-25 ng/mL (Sandwich ELISA)

Recommended Dilutions:

It is recommended that this reagent should be titrated in each testing system to obtain optimal results.

Product Information

MP50253-1 targets Cytokeratin 7 in immunoassays as a matched antibody pair. Validated in Cytometric bead array, Sandwich ELISA.

Capture antibody: Cytokeratin 7 Monoclonal antibody, PBS Only (Capture) 68859-1-PBS (3D4A7). 100 µg. Concentration 1 mg/mL.

Detection antibody: Cytokeratin 7 Monoclonal antibody, PBS Only (Detector) 68859-2-PBS (2C11G9). 100 µg. Concentration 1 mg/mL.

Unconjugated mouse monoclonal antibody pair in PBS only storage buffer at a concentration of 1 mg/mL, ready for conjugation.

Matched antibody pairs are designed for use in a variety of assays and platforms that require matched antibody pairs.

Antibody use should be optimized for each application and assay.

Storage

Storage:

Store at -80°C.

Storage buffer:

PBS only

For technical support and original validation data for this product please contact:

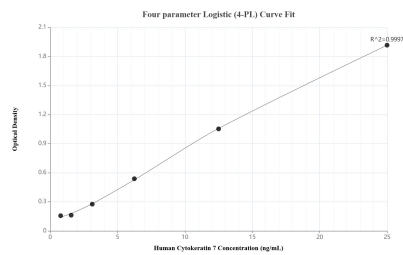
T: 1 (888) 4PTGLAB (1-888-478-4522) (toll free in USA), or 1(312) 455-8498 (outside USA)

E: proteintech@ptglab.com

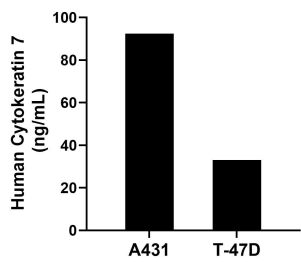
W: ptglab.com

This product is exclusively available under Proteintech Group brand and is not available to purchase from any other manufacturer.

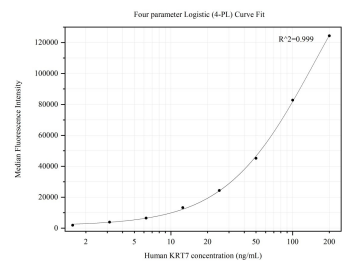
Selected Validation Data



Sandwich ELISA standard curve of MP50253-1, Human Cytokeratin 7 Monoclonal Matched Antibody Pair - PBS only. 68859-1-PBS was coated to a plate as the capture antibody and incubated with serial dilutions of standard Ag17703. 68859-2-PBS was HRP conjugated as the detection antibody. Range: 0.781-25 ng/mL



The mean Cytokeratin 7 concentration was determined to be 92.40 ng/mL in A431 cell extract based on a 1.50 mg/mL extract load and 33.00 ng/mL in T-47D cell extract based on a 1.80 mg/mL extract load.



Cytometric bead array standard curve of MP50253-1, KRT7 Monoclonal Matched Antibody Pair, PBS Only. Capture antibody: 68859-1-PBS. Detection antibody: 68859-2-PBS. Standard: Ag17703. Range: 1.563-200 ng/mL .