

For Research Use Only

CD100 Monoclonal Matched Antibody Pair, PBS Only



Catalog Number:MP50276-1

Capture Antibody Information

Catalog Number:

66582-2-PBS

Host:

Mouse

Isotype:

IgG1

Purification Method:

Protein G purification

Clone ID:

1B3G8

Reactivity:

human

Immunogen Catalog Number:

Ag26461

Conjugate:

Unconjugated

Full name:

sema domain, immunoglobulin domain (Ig), transmembrane domain (TM) and short cytoplasmic domain, (semaphorin) 4D

Gene ID:

10507

Detection Antibody Information

Catalog Number:

66582-3-PBS

Host:

Mouse

Isotype:

IgG1

Purification Method:

Protein G Magarose purification

Clone ID:

1C8C3

Reactivity:

human

GenBank:

BC054500

Immunogen Catalog Number:

Ag26461

Conjugate:

Unconjugated

Full name:

sema domain, immunoglobulin domain (Ig), transmembrane domain (TM) and short cytoplasmic domain, (semaphorin) 4D

Gene ID:

10507

Applications

Tested Applications:

Cytometric bead array

Range:

0.195-100 ng/mL (Cytometric Bead Array)

Recommended Dilutions:

It is recommended that this reagent should be titrated in each testing system to obtain optimal results.

Product Information

MP50276-1 targets CD100 in immunoassays as a matched antibody pair. Validated in Cytometric bead array.

Capture antibody: CD100 Monoclonal antibody, PBS Only (Capture/Detector) 66582-2-PBS (1B3G8). 100 µg. Concentration 1 mg/ml.

Detection antibody: CD100 Monoclonal antibody, PBS Only (Detector) 66582-3-PBS (1C8C3). 100 µg. Concentration 1 mg/ml.

Alternative CD100 matched antibody pairs: MP50276-2

Unconjugated mouse monoclonal antibody pair in PBS only storage buffer at a concentration of 1 mg/mL, ready for conjugation.

Matched antibody pairs are designed for use in a variety of assays and platforms that require matched antibody pairs.

Antibody use should be optimized for each application and assay.

Storage

Storage:

Store at -80°C.

Storage buffer:

PBS only

For technical support and original validation data for this product please contact:

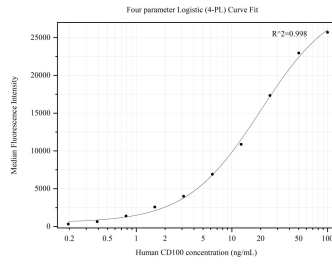
T: 1 (888) 4PTGLAB (1-888-478-4522) (toll free in USA), or 1(312) 455-8498 (outside USA)

E: proteintech@ptglab.com

W: ptglab.com

This product is exclusively available under Proteintech Group brand and is not available to purchase from any other manufacturer.

Selected Validation Data



Cytometric bead array standard curve of MP50276-1, CD100 Monoclonal Matched Antibody Pair, PBS Only. Capture antibody: 66582-2-PBS. Detection antibody: 66582-3-PBS. Standard: Ag26461. Range: 0.195-100 ng/mL.