

For Research Use Only

CALCA/Calcitonin Monoclonal Matched Antibody Pair, PBS Only



Catalog Number:MP50293-1

Capture Antibody Information

Catalog Number:
68774-1-PBS

Host:
Mouse

Isotype:
IgG1

Purification Method:
Protein A purification

Clone ID:
1A12A1

Reactivity:
human

Immunogen Catalog Number:
Ag26141

Conjugate:
Unconjugated

Full name:
Calcitonin

Gene ID:
796

Detection Antibody Information

Catalog Number:
68774-2-PBS

Host:
Mouse

Isotype:
IgG1

Purification Method:
Protein G purification

Clone ID:
2A8F7

Reactivity:
human

GenBank:
BC093753

Immunogen Catalog Number:
Ag26141

Conjugate:
Unconjugated

Full name:
Calcitonin

Gene ID:
796

Applications

Tested Applications:
Cytometric bead array

Range:
0.781-100 ng/mL (Cytometric Bead Array)

Recommended Dilutions:
It is recommended that this reagent should be titrated in each testing system to obtain optimal results.

Product Information

MP50293-1 targets CALCA/Calcitonin in immunoassays as a matched antibody pair. Validated in Cytometric bead array.

Capture antibody: CALCA/Calcitonin Monoclonal antibody, PBS Only (Capture) 68774-1-PBS (1A12A1). 100 µg. Concentration 1 mg/mL.

Detection antibody: CALCA/Calcitonin Monoclonal antibody, PBS Only (Detector) 68774-2-PBS (2A8F7). 100 µg. Concentration 1 mg/mL.

Unconjugated mouse monoclonal antibody pair in PBS only storage buffer at a concentration of 1 mg/mL, ready for conjugation.

Matched antibody pairs are designed for use in a variety of assays and platforms that require matched antibody pairs.

Antibody use should be optimized for each application and assay.

Storage

Storage:
Store at -80°C.
Storage buffer:
PBS only

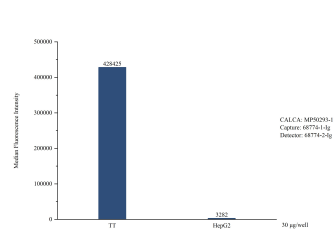
For technical support and original validation data for this product please contact:

T: 1 (888) 4PTGLAB (1-888-478-4522) (toll free in USA), or 1(312) 455-8498 (outside USA)

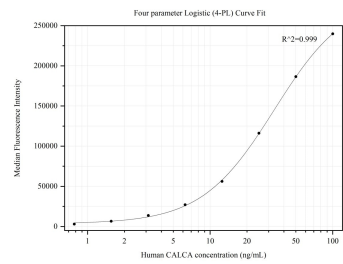
E: proteintech@ptglab.com
W: ptglab.com

This product is exclusively available under Proteintech Group brand and is not available to purchase from any other manufacturer.

Selected Validation Data



Cytometric bead array in cell lysate using MP50293-1, CALCA Monoclonal Matched Antibody Pair, PBS Only. Capture antibody: 68774-1-PBS. Detection antibody: 68774-2-PBS. Cell lysate: TT, HepG2.



Cytometric bead array standard curve of MP50293-1, CALCA Monoclonal Matched Antibody Pair, PBS Only. Capture antibody: 68774-1-PBS. Detection antibody: 68774-2-PBS. Standard:Ag26141. Range: 0.781-100 ng/mL