

For Research Use Only



# TMEM106B Monoclonal Matched Antibody Pair, PBS Only

Catalog Number:MP50326-1

## Capture Antibody Information

Catalog Number:  
60333-2-PBS

Host:  
Mouse

Isotype:  
IgG1

Purification Method:  
Protein A purification

Clone ID:  
4F3E9

Reactivity:  
human

Immunogen Catalog Number:  
Ag21448

Conjugate:  
Unconjugated

Full name:  
transmembrane protein 106B

Gene ID:  
54664

## Detection Antibody Information

Catalog Number:  
60333-3-PBS

Host:  
Mouse

Isotype:  
IgG2a

Purification Method:  
Protein A purification

Clone ID:  
4C9C11

Reactivity:  
human

GenBank:  
BC033901

Immunogen Catalog Number:  
Ag21448

Conjugate:  
Unconjugated

Full name:  
transmembrane protein 106B

Gene ID:  
54664

## Applications

Tested Applications:  
Cytometric bead array, Sandwich ELISA

Range:  
0.195-25 ng/mL (Cytometric Bead Array)  
0.313-20 ng/mL (Sandwich ELISA)

Recommended Dilutions:  
It is recommended that this reagent should be titrated in each testing system to obtain optimal results.

## Product Information

MP50326-1 targets TMEM106B in immunoassays as a matched antibody pair. Validated in Cytometric bead array, Sandwich ELISA.

Capture antibody: TMEM106B Monoclonal antibody, PBS Only (Capture) 60333-2-PBS (4F3E9). 100 µg. Concentration 1 mg/mL.

Detection antibody: TMEM106B Monoclonal antibody, PBS Only (Detector) 60333-3-PBS (4C9C11). 100 µg. Concentration 1 mg/mL.

Unconjugated mouse monoclonal antibody pair in PBS only storage buffer at a concentration of 1 mg/mL, ready for conjugation.

Matched antibody pairs are designed for use in a variety of assays and platforms that require matched antibody pairs.

Antibody use should be optimized for each application and assay.

## Storage

Storage:  
Store at -80°C.  
Storage buffer:  
PBS only

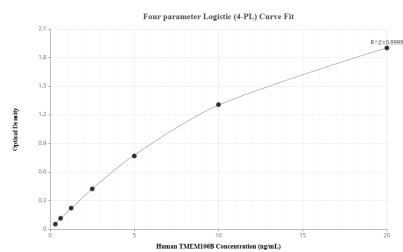
For technical support and original validation data for this product please contact:

T: 1 (888) 4PTGLAB (1-888-478-4522) (toll free in USA), or 1(312) 455-8498 (outside USA)

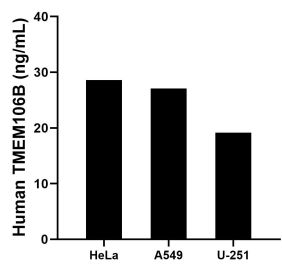
E: [proteintech@ptglab.com](mailto:proteintech@ptglab.com)  
W: [ptglab.com](http://ptglab.com)

This product is exclusively available under Proteintech Group brand and is not available to purchase from any other manufacturer.

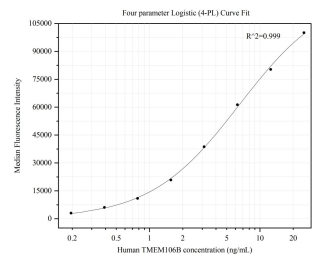
## Selected Validation Data



Sandwich ELISA standard curve of MP50326-1, Human TMEM106B Monoclonal Matched Antibody Pair - PBS only. 60333-2-PBS was coated to a plate as the capture antibody and incubated with serial dilutions of standard Ag21448. 60333-3-PBS was HRP conjugated as the detection antibody. Range: 0.313-20 ng/mL



The mean TMEM106B concentration was determined to be 28.61 ng/mL in HeLa cell extract based on a 2.1 mg/mL extract load, 27.06 ng/mL in A549 cell extract based on a 1.5 mg/mL extract load and 19.17 ng/mL in U-251 cell extract based on a 1.4 mg/mL extract load.



Cytometric bead array standard curve of MP50326-1, TMEM106B Monoclonal Matched Antibody Pair, PBS Only. Capture antibody: 60333-2-PBS. Detection antibody: 60333-3-PBS. Standard: Ag21448. Range: 0.195-25 ng/mL