

PRAME Monoclonal Matched Antibody Pair, PBS Only

Catalog Number: **MP50344-1**

Capture Antibody Information

Catalog Number:
68097-2-PBS
Host:
Mouse
Isotype:
IgG1
Purification Method:
Protein G purification

Clone ID:
5H11B6
Reactivity:
human
Immunogen Catalog Number:
Ag1906

Conjugate:
Unconjugated
Full name:
preferentially expressed antigen in melanoma
Gene ID:
23532

Detection Antibody Information

Catalog Number:
68097-3-PBS
Host:
Mouse
Isotype:
IgG2b
Purification Method:
Protein A purification

Clone ID:
2G1H5
Reactivity:
human
GenBank:
BC014074
Immunogen Catalog Number:
Ag1906

Conjugate:
Unconjugated
Full name:
preferentially expressed antigen in melanoma
Gene ID:
23532

Applications

Tested Applications:
Cytometric bead array, Sandwich ELISA

Range:
6.25-100 ng/mL (Cytometric Bead Array)
3.13-200 ng/mL (Sandwich ELISA)

Recommended Dilutions:
It is recommended that this reagent should be titrated in each testing system to obtain optimal results.

Product Information

MP50344-1 targets PRAME in immunoassays as a matched antibody pair. Validated in Cytometric bead array, Sandwich ELISA.

Capture antibody: PRAME Monoclonal antibody, PBS Only (Capture) 68097-2-PBS (5H11B6). 100 µg. Concentration 1 mg/mL.

Detection antibody: PRAME Monoclonal antibody, PBS Only (Detector) 68097-3-PBS (2G1H5). 100 µg. Concentration 1 mg/mL.

Unconjugated mouse monoclonal antibody pair in PBS only storage buffer at a concentration of 1 mg/mL, ready for conjugation.

Matched antibody pairs are designed for use in a variety of assays and platforms that require matched antibody pairs.

Antibody use should be optimized for each application and assay.

Storage

Storage:
Store at -80°C.
Storage buffer:
PBS only

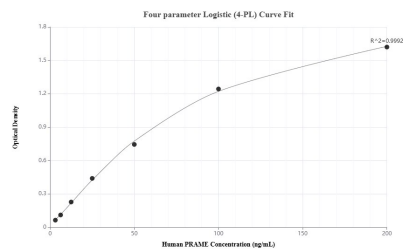
For technical support and original validation data for this product please contact:

T: 1 (888) 4PTGLAB (1-888-478-4522) (toll free in USA), or 1(312) 455-8498 (outside USA)

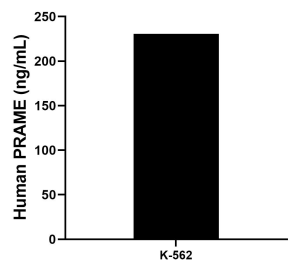
E: proteintech@ptglab.com
W: ptglab.com

This product is exclusively available under Proteintech Group brand and is not available to purchase from any other manufacturer.

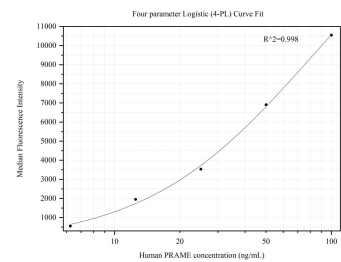
Selected Validation Data



Sandwich ELISA standard curve of MP50344-1, Human PRAME Monoclonal Matched Antibody Pair - PBS only. 68097-2-PBS was coated to a plate as the capture antibody and incubated with serial dilutions of standard Ag1906. 68097-3-PBS was HRP conjugated as the detection antibody. Range: 3.13-200 ng/mL



The mean PRAME concentration was determined to be 230.66 ng/mL in K-562 cell extract based on a 2.5 mg/mL extract load.



Cytometric bead array standard curve of MP50344-1, PRAME Monoclonal Matched Antibody Pair, PBS Only. Capture antibody: 68097-2-PBS. Detection antibody: 68097-3-PBS. Standard: Ag1906. Range: 6.25-100 ng/mL