

ANP32B Monoclonal Matched Antibody Pair, PBS Only

Catalog Number: **MP50363-3**

Capture Antibody Information

Catalog Number:
66160-3-PBS
Host:
Mouse
Isotype:
IgG1
Purification Method:
Protein G purification

Clone ID:
1H3E5
Reactivity:
human
Immunogen Catalog Number:
Ag1274

Conjugate:
Unconjugated
Full name:
acidic (leucine-rich) nuclear phosphoprotein 32 family, member B
Gene ID:
10541

Detection Antibody Information

Catalog Number:
66160-2-PBS
Host:
Mouse
Isotype:
IgG1
Purification Method:
Protein A purification

Clone ID:
3B6G9
Reactivity:
human
GenBank:
BC013003
Immunogen Catalog Number:
Ag1274

Conjugate:
Unconjugated
Full name:
acidic (leucine-rich) nuclear phosphoprotein 32 family, member B
Gene ID:
10541

Applications

Tested Applications:
Cytometric bead array, Sandwich ELISA

Range:
1.563-200 ng/mL (Cytometric Bead Array)
19.5-1250 pg/mL (Sandwich ELISA)

Recommended Dilutions:
It is recommended that this reagent should be titrated in each testing system to obtain optimal results.

Product Information

MP50363-3 targets ANP32B in immunoassays as a matched antibody pair. Validated in Cytometric bead array, Sandwich ELISA.

Capture antibody: ANP32B Monoclonal antibody, PBS Only (Capture/Detector) 66160-3-PBS (1H3E5). 100 µg. Concentration 1 mg/mL.

Detection antibody: ANP32B Monoclonal antibody, PBS Only (Detector) 66160-2-PBS (3B6G9). 100 µg. Concentration 1 mg/mL.

Unconjugated mouse monoclonal antibody pair in PBS only storage buffer at a concentration of 1 mg/mL, ready for conjugation.

Matched antibody pairs are designed for use in a variety of assays and platforms that require matched antibody pairs.

Antibody use should be optimized for each application and assay.

Storage

Storage:
Store at -80°C.
Storage buffer:
PBS only

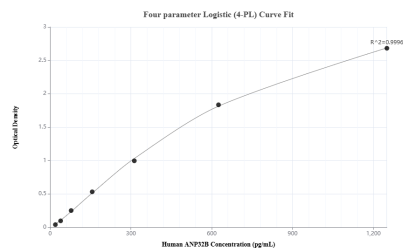
For technical support and original validation data for this product please contact:

T: 1 (888) 4PTGLAB (1-888-478-4522) (toll free in USA), or 1(312) 455-8498 (outside USA)

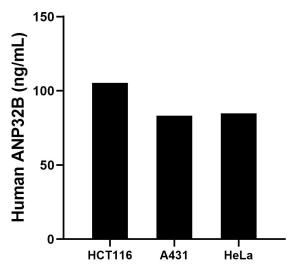
E: proteintech@ptglab.com
W: ptglab.com

This product is exclusively available under Proteintech Group brand and is not available to purchase from any other manufacturer.

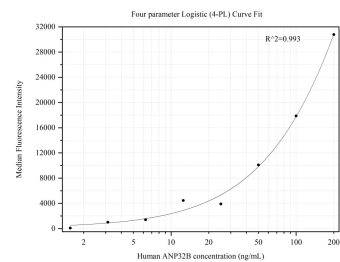
Selected Validation Data



Sandwich ELISA standard curve of MP50363-3, Human ANP32B Monoclonal Matched Antibody Pair - PBS only. 66160-3-PBS was coated to a plate as the capture antibody and incubated with serial dilutions of standard Ag1274. 66160-2-PBS was HRP conjugated as the detection antibody. Range: 19.5-1250 pg/mL



The mean ANP32B concentration was determined to be 105.34 ng/mL in HCT116 cell extract based on a 2.0 mg/mL extract load, 83.16 ng/mL in A431 cell extract based on a 1.3 mg/mL extract load and 84.78 ng/mL in HeLa cell extract based on a 1.5 mg/mL extract load.



Cytometric bead array standard curve of MP50363-3, ANP32B Monoclonal Matched Antibody Pair, PBS Only. Capture antibody: 66160-3-PBS. Detection antibody: 66160-2-PBS. Standard: Ag1274. Range: 1.563-200 ng/mL