

# EIF5A Monoclonal Matched Antibody Pair, PBS Only

Catalog Number: **MP50372-1**

## Capture Antibody Information

**Catalog Number:**  
67214-2-PBS

**Host:**  
Mouse

**Isotype:**  
IgG1

**Purification Method:**  
Protein G purification

**Clone ID:**  
1E3E10

**Reactivity:**  
human

**Immunogen Catalog Number:**  
Ag28588

**Conjugate:**  
Unconjugated

**Full name:**  
eukaryotic translation initiation factor 5A

**Gene ID:**  
1984

## Detection Antibody Information

**Catalog Number:**  
67214-3-PBS

**Host:**  
Mouse

**Isotype:**  
IgG1

**Purification Method:**  
Protein G Magarose purification

**Clone ID:**  
1D6C11

**Reactivity:**  
human

**GenBank:**  
BC001832

**Immunogen Catalog Number:**  
Ag28588

**Conjugate:**  
Unconjugated

**Full name:**  
eukaryotic translation initiation factor 5A

**Gene ID:**  
1984

## Applications

**Tested Applications:**  
Cytometric bead array, Sandwich ELISA

**Range:**  
1.563-50 ng/mL (Cytometric Bead Array)  
1.56-100 ng/mL (Sandwich ELISA)

**Recommended Dilutions:**  
It is recommended that this reagent should be titrated in each testing system to obtain optimal results.

## Product Information

MP50372-1 targets EIF5A in immunoassays as a matched antibody pair. Validated in Cytometric bead array, Sandwich ELISA.

Capture antibody: EIF5A Monoclonal antibody, PBS Only (Capture) 67214-2-PBS (1E3E10). 100 µg. Concentration 1 mg/mL.

Detection antibody: EIF5A Monoclonal antibody, PBS Only (Detector) 67214-3-PBS (1D6C11). 100 µg. Concentration 1 mg/mL.

Unconjugated mouse monoclonal antibody pair in PBS only storage buffer at a concentration of 1 mg/mL, ready for conjugation.

Matched antibody pairs are designed for use in a variety of assays and platforms that require matched antibody pairs.

Antibody use should be optimized for each application and assay.

## Storage

**Storage:**  
Store at -80°C.

**Storage buffer:**  
PBS only

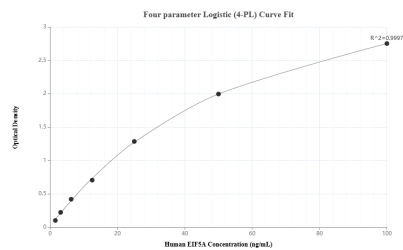
For technical support and original validation data for this product please contact:

T: 1 (888) 4PTGLAB (1-888-478-4522) (toll free in USA), or 1(312) 455-8498 (outside USA)

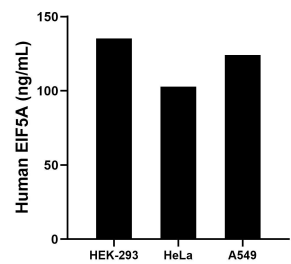
E: [proteintech@ptglab.com](mailto:proteintech@ptglab.com)  
W: [ptglab.com](http://ptglab.com)

**This product is exclusively available under Proteintech Group brand and is not available to purchase from any other manufacturer.**

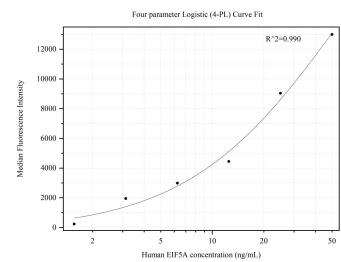
## Selected Validation Data



Sandwich ELISA standard curve of MP50372-1, Human EIF5A Monoclonal Matched Antibody Pair - PBS only. 67214-2-PBS was coated to a plate as the capture antibody and incubated with serial dilutions of standard Ag1849. 67214-3-PBS was HRP conjugated as the detection antibody. Range: 1.56-100 ng/mL



The mean EIF5A concentration was determined to be 135.22 ng/mL in HEK-293 cell extract based on a 2.2 mg/mL extract load, 102.87 ng/mL in HeLa cell extract based on a 1.8 mg/mL extract load and 124.18 ng/mL in A549 cell extract based on a 3.1 mg/mL extract load.



Cytometric bead array standard curve of MP50372-1, EIF5A Monoclonal Matched Antibody Pair, PBS Only. Capture antibody: 67214-2-PBS. Detection antibody: 67214-3-PBS. Standard: Ag1849. Range: 1.563-50 ng/mL