

TBX1 Monoclonal Matched Antibody Pair, PBS Only

Catalog Number: **MP50397-3**

Capture Antibody Information

Catalog Number:
68951-5-PBS

Host:
Mouse

Isotype:
IgG2a

Purification Method:
Protein A Magarose purification

Clone ID:
2C11C6

Reactivity:
human

Immunogen Catalog Number:
Ag26792

Conjugate:
Unconjugated

Full name:
T-box 1

Gene ID:
6899

Detection Antibody Information

Catalog Number:
68951-6-PBS

Host:
Mouse

Isotype:
IgG1

Purification Method:
Protein G Magarose purification

Clone ID:
1F10C3

Reactivity:
human

GenBank:
NM_005992

Immunogen Catalog Number:
Ag26792

Conjugate:
Unconjugated

Full name:
T-box 1

Gene ID:
6899

Applications

Tested Applications:
Cytometric bead array

Range:
1.563-50 ng/mL (Cytometric Bead Array)

Recommended Dilutions:
It is recommended that this reagent should be titrated in each testing system to obtain optimal results.

Product Information

MP50397-3 targets TBX1 in immunoassays as a matched antibody pair. Validated in Cytometric bead array.

Capture antibody: TBX1 Monoclonal antibody, PBS Only (Capture) 68951-5-PBS (2C11C6). 100 µg. Concentration 1 mg/mL.

Detection antibody: TBX1 Monoclonal antibody, PBS Only (Detector) 68951-6-PBS (1F10C3). 100 µg. Concentration 1 mg/mL.

Alternative TBX1 matched antibody pairs: MP50397-1, MP50397-2, MP50397-4

Unconjugated mouse monoclonal antibody pair in PBS only storage buffer at a concentration of 1 mg/mL, ready for conjugation.

Matched antibody pairs are designed for use in a variety of assays and platforms that require matched antibody pairs.

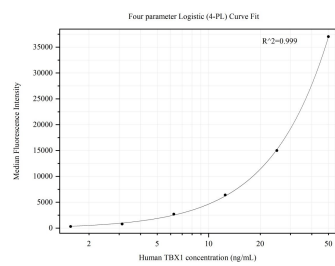
Antibody use should be optimized for each application and assay.

Storage

Storage:
Store at -80°C.

Storage buffer:
PBS only

Selected Validation Data



Cytometric bead array standard curve of MP50397-3, TBX1 Monoclonal Matched Antibody Pair, PBS Only. Capture antibody: 68951-5-PBS. Detection antibody: 68951-6-PBS. Standard:Ag26792. Range: 1.563-50 ng/mL