

# PPIF-Specific Monoclonal Matched Antibody Pair, PBS Only

Catalog Number: **MP50406-2**

## Capture Antibody Information

Catalog Number:  
68956-3-PBS

Host:  
Mouse

Isotype:  
IgG1

Purification Method:  
Protein G purification

Clone ID:  
3A12B5

Reactivity:  
human

Immunogen Catalog Number:  
Ag13151

Conjugate:  
Unconjugated

Full name:  
peptidylprolyl isomerase F

Gene ID:  
10105

## Detection Antibody Information

Catalog Number:  
68956-4-PBS

Host:  
Mouse

Isotype:  
IgG2b

Purification Method:  
Protein A purification

Clone ID:  
3F9B6

Reactivity:  
human

GenBank:  
BC005020

Immunogen Catalog Number:  
Ag13151

Conjugate:  
Unconjugated

Full name:  
peptidylprolyl isomerase F

Gene ID:  
10105

## Applications

Tested Applications:

Cytometric bead array, Sandwich  
ELISA

Range:

1.563-100 ng/mL (Cytometric Bead  
Array)  
12.5-800 ng/mL (Sandwich ELISA)

Recommended Dilutions:

It is recommended that this reagent  
should be titrated in each testing  
system to obtain optimal results.

## Product Information

MP50406-2 targets PPIF-Specific in immunoassays as a matched antibody pair. Validated in Cytometric bead array, Sandwich ELISA.

Capture antibody: PPIF Monoclonal antibody, PBS Only (Capture/Detector) 68956-3-PBS (3A12B5). 100 µg. Concentration 1 mg/mL.

Detection antibody: PPIF Monoclonal antibody, PBS Only (Detector) 68956-4-PBS (3F9B6). 100 µg. Concentration 1 mg/mL.

Unconjugated mouse monoclonal antibody pair in PBS only storage buffer at a concentration of 1 mg/mL, ready for conjugation.

Matched antibody pairs are designed for use in a variety of assays and platforms that require matched antibody pairs.

Antibody use should be optimized for each application and assay.

## Storage

Storage:

Store at -80°C.

Storage buffer:  
PBS only

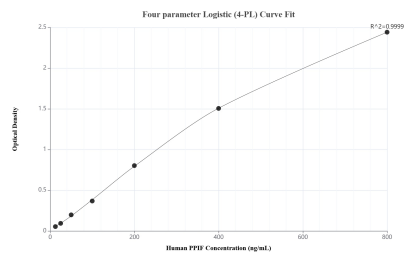
For technical support and original validation data for this product please contact:

T: 1 (888) 4PTGLAB (1-888-478-4522) (toll free  
in USA), or 1(312) 455-8498 (outside USA)

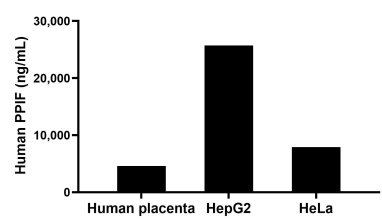
E: [proteintech@ptglab.com](mailto:proteintech@ptglab.com)  
W: [ptglab.com](http://ptglab.com)

**This product is exclusively available under Proteintech Group brand and is not available to purchase from any other manufacturer.**

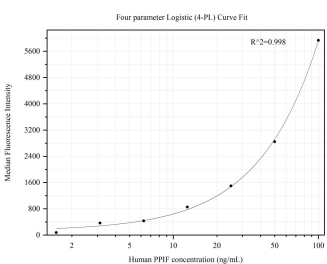
## Selected Validation Data



Sandwich ELISA standard curve of MP50406-2, Human PPIF Monoclonal Matched Antibody Pair - PBS only. 68956-3-PBS was coated to a plate as the capture antibody and incubated with serial dilutions of standard Ag13151. 68956-4-PBS was HRP conjugated as the detection antibody. Range: 12.5-800 ng/mL



The mean PPIF concentration was determined to be 4,606.00 ng/mL in human placenta tissue extract based on a 1.30 mg/mL extract load, 25,711.00 ng/mL in HepG2 cell extract based on a 1.80 mg/mL extract load and 7,896.00 ng/mL in HeLa cell extract based on a 1.50 mg/mL extract load.



Cytometric bead array standard curve of MP50406-2, PPIF-Specific Monoclonal Matched Antibody Pair, PBS Only. Capture antibody: 68956-3-PBS. Detection antibody: 68956-4-PBS. Standard: Ag13151. Range: 1.563-100 ng/mL