

For Research Use Only

IL4I1 Monoclonal Matched Antibody Pair, PBS Only



Catalog Number:MP50424-1

Capture Antibody Information

Catalog Number:
68955-1-PBS

Host:
Mouse

Isotype:
IgG1

Purification Method:
Protein G purification

Clone ID:
2G5F12

Reactivity:
human

Immunogen Catalog Number:
Ag19136

Conjugate:
Unconjugated

Full name:
interleukin 4 induced 1

Gene ID:
259307

Detection Antibody Information

Catalog Number:
68955-2-PBS

Host:
Mouse

Isotype:
IgG1

Purification Method:
Protein G purification

Clone ID:
2E7E9

Reactivity:
human

GenBank:
BC131625

Immunogen Catalog Number:
Ag19136

Conjugate:
Unconjugated

Full name:
interleukin 4 induced 1

Gene ID:
259307

Applications

Tested Applications:
Sandwich ELISA

Range:
125-8000 pg/mL (Sandwich ELISA)

Recommended Dilutions:
It is recommended that this reagent should be titrated in each testing system to obtain optimal results.

Product Information

MP50424-1 targets IL4I1 in immunoassays as a matched antibody pair. Validated in Sandwich ELISA.

Capture antibody: IL4I1 Monoclonal antibody, PBS Only (Capture) 68955-1-PBS (2G5F12). 100 µg. Concentration 1 mg/mL.

Detection antibody: IL4I1 Monoclonal antibody, PBS Only (Detector) 68955-2-PBS (2E7E9). 100 µg. Concentration 1 mg/mL.

Unconjugated mouse monoclonal antibody pair in PBS only storage buffer at a concentration of 1 mg/mL, ready for conjugation.

Matched antibody pairs are designed for use in a variety of assays and platforms that require matched antibody pairs.

Antibody use should be optimized for each application and assay.

Storage

Storage:
Store at -80°C.
Storage buffer:
PBS only

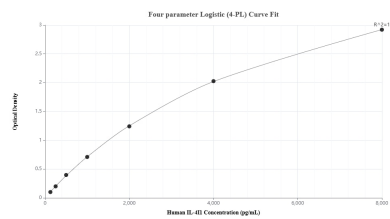
For technical support and original validation data for this product please contact:

T: 1 (888) 4PTGLAB (1-888-478-4522) (toll free in USA), or 1(312) 455-8498 (outside USA)

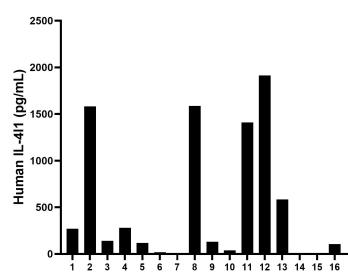
E: proteintech@ptglab.com
W: ptglab.com

This product is exclusively available under Proteintech Group brand and is not available to purchase from any other manufacturer.

Selected Validation Data



Sandwich ELISA standard curve of MP50424-1, Human IL4I1 Monoclonal Matched Antibody Pair - PBS only. 68955-1-PBS was coated to a plate as the capture antibody and incubated with serial dilutions of standard Ag19136. 68955-2-PBS was HRP conjugated as the detection antibody. Range: 125-8000 pg/mL



Serum of sixteen individual healthy human donors was measured. The human IL4I1 concentration of detected samples was determined to be 629.0 pg/mL with a range of ND - 1913.6 pg/mL.