

Osteopontin Monoclonal Matched Antibody Pair, PBS Only

Catalog Number: **MP50455-1**

Capture Antibody Information

Catalog Number:

68983-1-PBS

Host:

Mouse

Isotype:

IgG1

Purification Method:

Protein G Magarose purification

Clone ID:

1C9D1

Reactivity:

human

Immunogen Catalog Number:

Ag19216

Conjugate:

Unconjugated

Full name:

secreted phosphoprotein 1

Gene ID:

6696

Detection Antibody Information

Catalog Number:

68983-2-PBS

Host:

Mouse

Isotype:

IgG1

Purification Method:

Protein G purification

Clone ID:

1E12B12

Reactivity:

human

GenBank:

BC007016

Immunogen Catalog Number:

Ag19216

Conjugate:

Unconjugated

Full name:

secreted phosphoprotein 1

Gene ID:

6696

Applications

Tested Applications:

Cytometric bead array

Range:

0.098-100 ng/mL (Cytometric Bead Array)

Recommended Dilutions:

It is recommended that this reagent should be titrated in each testing system to obtain optimal results.

Product Information

MP50455-1 targets Osteopontin in immunoassays as a matched antibody pair. Validated in Cytometric bead array.

Capture antibody: Osteopontin Monoclonal antibody, PBS Only (Capture) 68983-1-PBS (1C9D1). 100 µg. Concentration 1 mg/mL.

Detection antibody: Osteopontin Monoclonal antibody, PBS Only (Detector) 68983-2-PBS (1E12B12). 100 µg. Concentration 1 mg/mL.

Unconjugated mouse monoclonal antibody pair in PBS only storage buffer at a concentration of 1 mg/mL, ready for conjugation.

Matched antibody pairs are designed for use in a variety of assays and platforms that require matched antibody pairs.

Antibody use should be optimized for each application and assay.

Storage

Storage:

Store at -80°C.

Storage buffer:

PBS only

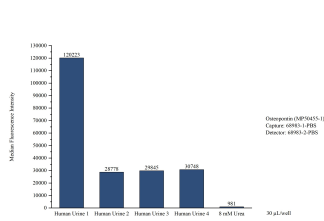
For technical support and original validation data for this product please contact:

T: 1 (888) 4PTGLAB (1-888-478-4522) (toll free in USA), or 1(312) 455-8498 (outside USA)

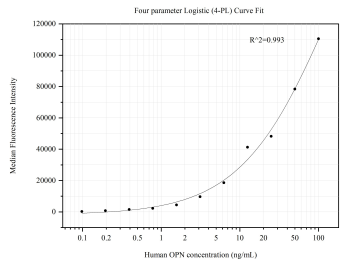
E: proteintech@ptglab.com
W: ptglab.com

This product is exclusively available under Proteintech Group brand and is not available to purchase from any other manufacturer.

Selected Validation Data



Cytometric bead array of Human urine using MP50455-1, Osteopontin Monoclonal Matched Antibody Pair, PBS Only. Capture antibody: 68983-1-PBS. Detection antibody: 68983-2-PBS. Urine of four individual healthy human donors was analyzed using MP50455-1.



Cytometric bead array standard curve of MP50455-1, OPN, SPP1 Monoclonal Matched Antibody Pair, PBS Only. Capture antibody: 68983-1-PBS. Detection antibody: 68983-2-PBS. Standard:Ag19216. Range: 0.098-100 ng/mL.