

# PROK1 Monoclonal Matched Antibody Pair, PBS Only

Catalog Number: **MP50534-2**

## Capture Antibody Information

**Catalog Number:**

60417-1-PBS

**Host:**

Mouse

**Isotype:**

IgG1

**Purification Method:**

Protein G Magarose purification

**Clone ID:**

1E12G3

**Reactivity:**

human

**Immunogen Catalog Number:**

Ag8079

**Conjugate:**

Unconjugated

**Full name:**

prokineticin 1

**Gene ID:**

84432

## Detection Antibody Information

**Catalog Number:**

60417-3-PBS

**Host:**

Mouse

**Isotype:**

IgG1

**Purification Method:**

Protein G Magarose purification

**Clone ID:**

3B3G2

**Reactivity:**

human

**GenBank:**

BC025399

**Immunogen Catalog Number:**

Ag8079

**Conjugate:**

Unconjugated

**Full name:**

prokineticin 1

**Gene ID:**

84432

## Applications

**Tested Applications:**

Cytometric bead array, Sandwich ELISA

**Range:**

0.781-100 ng/mL (Cytometric Bead Array)  
23.4-1500 pg/mL (Sandwich ELISA)

**Recommended Dilutions:**

It is recommended that this reagent should be titrated in each testing system to obtain optimal results.

## Product Information

MP50534-2 targets PROK1 in immunoassays as a matched antibody pair. Validated in Cytometric bead array, Sandwich ELISA.

Capture antibody: Prokineticin 1 Monoclonal antibody, PBS Only (Capture) 60417-1-PBS (1E12G3). 100 µg. Concentration 1 mg/mL.

Detection antibody: Prokineticin 1 Monoclonal antibody, PBS Only (Detector) 60417-3-PBS (3B3G2). 100 µg. Concentration 1 mg/mL.

Unconjugated mouse monoclonal antibody pair in PBS only storage buffer at a concentration of 1 mg/mL, ready for conjugation.

Matched antibody pairs are designed for use in a variety of assays and platforms that require matched antibody pairs.

Antibody use should be optimized for each application and assay.

## Storage

**Storage:**

Store at -80°C.

**Storage buffer:**

PBS only

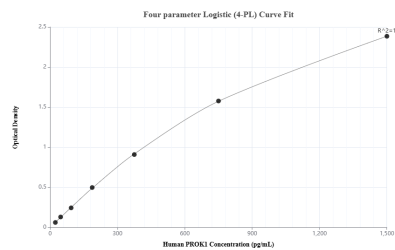
For technical support and original validation data for this product please contact:

T: 1 (888) 4PTGLAB (1-888-478-4522) (toll free in USA), or 1(312) 455-8498 (outside USA)

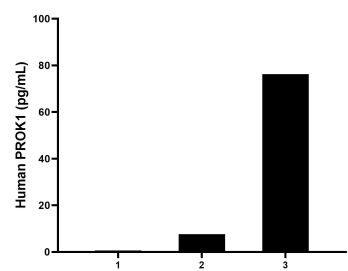
E: [proteintech@ptglab.com](mailto:proteintech@ptglab.com)  
W: [ptglab.com](http://ptglab.com)

**This product is exclusively available under Proteintech Group brand and is not available to purchase from any other manufacturer.**

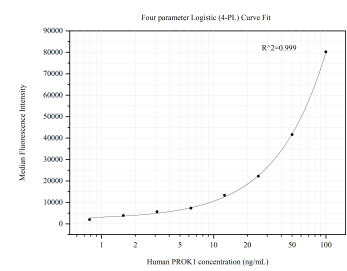
## Selected Validation Data



Sandwich ELISA standard curve of MP50534-2, Human PROK1 Monoclonal Matched Antibody Pair - PBS only. 60417-1-PBS was coated to a plate as the capture antibody and incubated with serial dilutions of standard Ag8079. 60417-3-PBS was HRP conjugated as the detection antibody. Range: 23.4-1500 pg/mL



Serum of three individual healthy human donors was measured. The human PROK1 concentration of detected samples was determined to be 28.1 pg/mL with a range of 0.6-76.2 pg/mL



Cytometric bead array standard curve of MP50534-2, PROK1 Monoclonal Matched Antibody Pair, PBS Only. Capture antibody: 60417-1-PBS. Detection antibody: 60417-3-PBS. Standard: Ag8079. Range: 0.781-100 ng/mL