

For Research Use Only

SOD2 Monoclonal Matched Antibody Pair, PBS Only



Catalog Number:MP50535-2

Capture Antibody Information

Catalog Number:
66474-2-PBS
Host:
Mouse
Isotype:
IgG1
Purification Method:
Protein G purification

Clone ID:
2B3B7
Reactivity:
human
Immunogen Catalog Number:
Ag21388

Conjugate:
Unconjugated
Full name:
superoxide dismutase 2,
mitochondrial
Gene ID:
6648

Detection Antibody Information

Catalog Number:
66474-4-PBS
Host:
Mouse
Isotype:
IgG1
Purification Method:
Protein G purification

Clone ID:
1G6D8
Reactivity:
human
GenBank:
BC016934
Immunogen Catalog Number:
Ag21388

Conjugate:
Unconjugated
Full name:
superoxide dismutase 2,
mitochondrial
Gene ID:
6648

Applications

Tested Applications:
Cytometric bead array, Sandwich
ELISA

Range:
3.125-100 ng/mL (Cytometric Bead
Array)
0.781-50 ng/mL (Sandwich ELISA)

Recommended Dilutions:
It is recommended that this reagent
should be titrated in each testing
system to obtain optimal results.

Product Information

MP50535-2 targets SOD2 in immunoassays as a matched antibody pair. Validated in Cytometric bead array, Sandwich ELISA.

Capture antibody: SOD2 Monoclonal antibody, PBS Only (Capture) 66474-2-PBS (2B3B7). 100 µg. Concentration 1 mg/mL.

Detection antibody: SOD2 Monoclonal antibody, PBS Only (Detector) 66474-4-PBS (1G6D8). 100 µg. Concentration 1 mg/mL.

Unconjugated mouse monoclonal antibody pair in PBS only storage buffer at a concentration of 1 mg/mL, ready for conjugation.

Matched antibody pairs are designed for use in a variety of assays and platforms that require matched antibody pairs.

Antibody use should be optimized for each application and assay.

Storage

Storage:
Store at -80°C.
Storage buffer:
PBS only

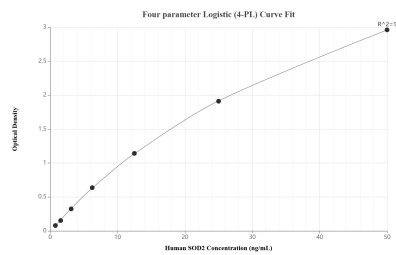
For technical support and original validation data for this product please contact:

T: 1 (888) 4PTGLAB (1-888-478-4522) (toll free
in USA), or 1(312) 455-8498 (outside USA)

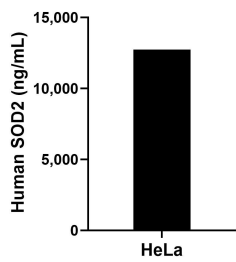
E: proteintech@ptglab.com
W: ptglab.com

This product is exclusively available under Proteintech Group brand and is not available to purchase from any other manufacturer.

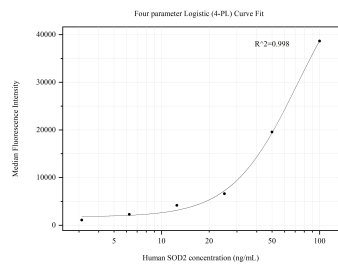
Selected Validation Data



Sandwich ELISA standard curve of MP50535-2, Human SOD2 Monoclonal Matched Antibody Pair - PBS only. 66474-2-PBS was coated to a plate as the capture antibody and incubated with serial dilutions of standard Ag21388. 66474-4-PBS was HRP conjugated as the detection antibody. Range: 0.781-50 ng/mL



The mean SOD2 concentration was determined to be 12,745.00 ng/mL in HeLa cell extract based on a 1.80 mg/mL extract load.



Cytometric bead array standard curve of MP50535-2, SOD2 Monoclonal Matched Antibody Pair, PBS Only. Capture antibody: 66474-2-PBS. Detection antibody: 66474-4-PBS. Standard: Ag21388. Range: 3.125-100 ng/mL