

GSTP1 Monoclonal Matched Antibody Pair, PBS Only

Catalog Number: **MP50579-1**

Capture Antibody Information

Catalog Number:
66715-2-PBS
Host:
Mouse
Isotype:
IgG1
Purification Method:
Protein G purification

Clone ID:
3G10H2
Reactivity:
human
Immunogen Catalog Number:
Ag8880

Conjugate:
Unconjugated
Full name:
glutathione S-transferase pi 1
Gene ID:
2950

Detection Antibody Information

Catalog Number:
66715-3-PBS
Host:
Mouse
Isotype:
IgG1
Purification Method:
Protein G purification

Clone ID:
3C3F4
Reactivity:
human
GenBank:
BC010915
Immunogen Catalog Number:
Ag8880

Conjugate:
Unconjugated
Full name:
glutathione S-transferase pi 1
Gene ID:
2950

Applications

Tested Applications:
Cytometric bead array, Sandwich ELISA

Range:
1.563-50 ng/mL (Cytometric Bead Array)
1.25-80 ng/mL (Sandwich ELISA)

Recommended Dilutions:
It is recommended that this reagent should be titrated in each testing system to obtain optimal results.

Product Information

MP50579-1 targets GSTP1 in immunoassays as a matched antibody pair. Validated in Cytometric bead array, Sandwich ELISA.

Capture antibody: GSTP1 Monoclonal antibody, PBS Only (Capture) 66715-2-PBS (3G10H2). 100 µg. Concentration 1 mg/mL.

Detection antibody: GSTP1 Monoclonal antibody, PBS Only (Detector) 66715-3-PBS (3C3F4). 100 µg. Concentration 1 mg/mL.

Unconjugated mouse monoclonal antibody pair in PBS only storage buffer at a concentration of 1 mg/mL, ready for conjugation.

Matched antibody pairs are designed for use in a variety of assays and platforms that require matched antibody pairs.

Antibody use should be optimized for each application and assay.

Storage

Storage:
Store at -80°C.
Storage buffer:
PBS only

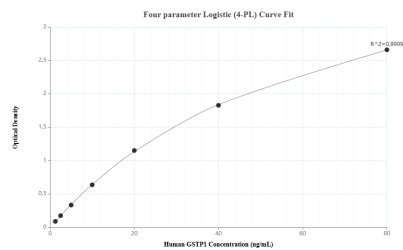
For technical support and original validation data for this product please contact:

T: 1 (888) 4PTGLAB (1-888-478-4522) (toll free in USA), or 1(312) 455-8498 (outside USA)

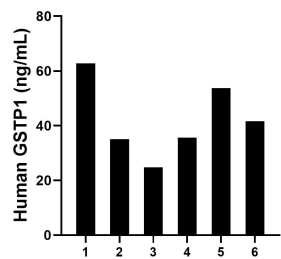
E: proteintech@ptglab.com
W: ptglab.com

This product is exclusively available under Proteintech Group brand and is not available to purchase from any other manufacturer.

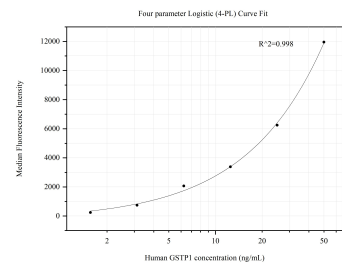
Selected Validation Data



Sandwich ELISA standard curve of MP50579-1, Human GSTP1 Monoclonal Matched Antibody Pair - PBS only. 66715-2-PBS was coated to a plate as the capture antibody and incubated with serial dilutions of standard Ag8880. 66715-3-PBS was HRP conjugated as the detection antibody. Range: 1.25-80 ng/mL



Serum of six individual healthy human donors was measured. The human GSTP1 concentration of detected samples was determined to be 42.26 ng/mL with a range of 24.74 - 62.83 ng/mL



Cytometric bead array standard curve of MP50579-1, GSTP1 Monoclonal Matched Antibody Pair, PBS Only. Capture antibody: 66715-2-PBS. Detection antibody: 66715-3-PBS. Standard:Ag8880. Range: 1.563-50 ng/mL