

For Research Use Only

PARL Monoclonal Matched Antibody Pair, PBS Only



Catalog Number:MP50588-2

Capture Antibody Information

Catalog Number:
68366-3-PBS
Host:
Mouse
Isotype:
IgG1
Purification Method:
Protein G Magarose purification

Clone ID:
1G10F9
Reactivity:
human
Immunogen Catalog Number:
Ag24789

Conjugate:
Unconjugated
Full name:
presenilin associated, rhomboid-like
Gene ID:
55486

Detection Antibody Information

Catalog Number:
68366-2-PBS
Host:
Mouse
Isotype:
IgG1
Purification Method:
Protein G Magarose purification

Clone ID:
3A7G1
Reactivity:
human
GenBank:
BC014058
Immunogen Catalog Number:
Ag24789

Conjugate:
Unconjugated
Full name:
presenilin associated, rhomboid-like
Gene ID:
55486

Applications

Tested Applications:
Cytometric bead array, Sandwich ELISA

Range:
0.195-100 ng/mL (Cytometric Bead Array)
0.78-50 ng/mL (Sandwich ELISA)

Recommended Dilutions:
It is recommended that this reagent should be titrated in each testing system to obtain optimal results.

Product Information

MP50588-2 targets PARL in immunoassays as a matched antibody pair. Validated in Cytometric bead array, Sandwich ELISA.

Capture antibody: PARL Monoclonal antibody, PBS Only (Capture) 68366-3-PBS (1G10F9). 100 µg. Concentration 1 mg/mL.

Detection antibody: PARL Monoclonal antibody, PBS Only (Detector) 68366-2-PBS (3A7G1). 100 µg. Concentration 1 mg/mL.

Unconjugated mouse monoclonal antibody pair in PBS only storage buffer at a concentration of 1 mg/mL, ready for conjugation.

Matched antibody pairs are designed for use in a variety of assays and platforms that require matched antibody pairs.

Antibody use should be optimized for each application and assay.

Storage

Storage:
Store at -80°C.
Storage buffer:
PBS only

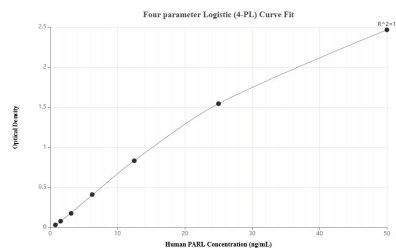
For technical support and original validation data for this product please contact:

T: 1 (888) 4PTGLAB (1-888-478-4522) (toll free in USA), or 1(312) 455-8498 (outside USA)

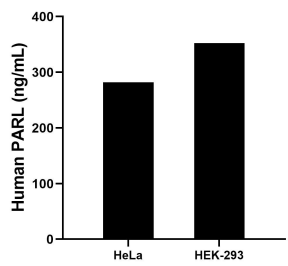
E: proteintech@ptglab.com
W: ptglab.com

This product is exclusively available under Proteintech Group brand and is not available to purchase from any other manufacturer.

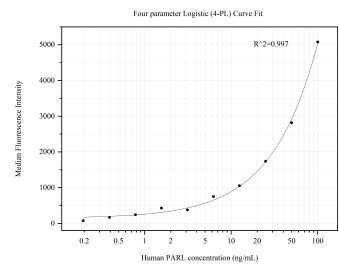
Selected Validation Data



Sandwich ELISA standard curve of MP50588-2, Human PARL Monoclonal Matched Antibody Pair - PBS only. 68366-3-PBS was coated to a plate as the capture antibody and incubated with serial dilutions of standard Ag24789. 68366-2-PBS was HRP conjugated as the detection antibody. Range: 0.78-50 ng/mL



The mean PARL concentration was determined to be 282.18 ng/mL in HeLa cell extract based on a 1.8 mg/mL extract load and 352.24 ng/mL in HEK-293 cell extract based on a 2.2 mg/mL extract load.



Cytometric bead array standard curve of MP50588-2, PARL Monoclonal Matched Antibody Pair, PBS Only. Capture antibody: 68366-3-PBS. Detection antibody: 68366-2-PBS. Standard: Ag24789. Range: 0.195-100 ng/mL