

CCL24 Monoclonal Matched Antibody Pair, PBS Only

Catalog Number: **MP50599-2**

Capture Antibody Information

Catalog Number:
60443-3-PBS
Host:
Mouse
Isotype:
IgG1
Purification Method:
Protein G Magarose purification

Clone ID:
3D11H11
Reactivity:
human

Conjugate:
Unconjugated
Full name:
chemokine (C-C motif) ligand 24
Gene ID:
6369

Detection Antibody Information

Catalog Number:
60443-1-PBS
Host:
Mouse
Isotype:
IgG1
Purification Method:
Protein G Magarose purification

Clone ID:
2A4E10
Reactivity:
human
GenBank:
NM_002991

Conjugate:
Unconjugated
Full name:
chemokine (C-C motif) ligand 24
Gene ID:
6369

Applications

Tested Applications:
Cytometric bead array, Sandwich ELISA

Range:
0.195-100 ng/mL (Cytometric Bead Array)
7.81-500 pg/mL (Sandwich ELISA)

Recommended Dilutions:
It is recommended that this reagent should be titrated in each testing system to obtain optimal results.

Product Information

MP50599-2 targets CCL24 in immunoassays as a matched antibody pair. Validated in Cytometric bead array, Sandwich ELISA.

Capture antibody: CCL24/Eotaxin 2 Monoclonal antibody, PBS Only (Capture) 60443-3-PBS (3D11H11). 100 µg. Concentration 1 mg/mL.

Detection antibody: CCL24/Eotaxin 2 Monoclonal antibody, PBS Only (Capture/Detector) 60443-1-PBS (2A4E10). 100 µg. Concentration 1 mg/mL.

Unconjugated mouse monoclonal antibody pair in PBS only storage buffer at a concentration of 1 mg/mL, ready for conjugation.

Matched antibody pairs are designed for use in a variety of assays and platforms that require matched antibody pairs.

Antibody use should be optimized for each application and assay.

Storage

Storage:
Store at -80°C.
Storage buffer:
PBS only

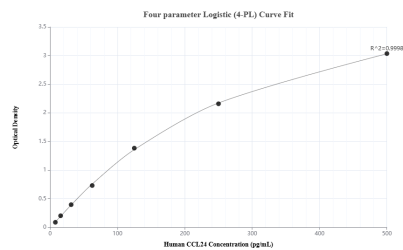
For technical support and original validation data for this product please contact:

T: 1 (888) 4PTGLAB (1-888-478-4522) (toll free in USA), or 1(312) 455-8498 (outside USA)

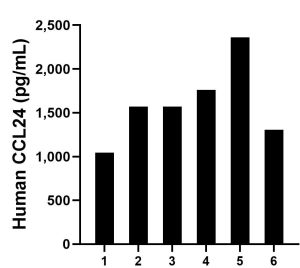
E: proteintech@ptglab.com
W: ptglab.com

This product is exclusively available under Proteintech Group brand and is not available to purchase from any other manufacturer.

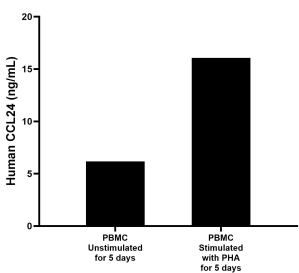
Selected Validation Data



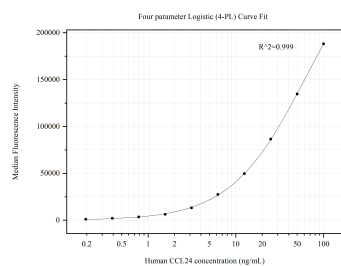
Sandwich ELISA standard curve of MP50599-2, Human CCL24 Monoclonal Matched Antibody Pair - PBS only. 60443-3-PBS was coated to a plate as the capture antibody and incubated with serial dilutions of standard Eg0395. 60443-1-PBS was HRP conjugated as the detection antibody. Range: 7.81-500 pg/mL



Serum of six individual healthy human donors was measured. The human CCL24 concentration of detected samples was determined to be 1,601.6 pg/mL with a range of 1,044.2 - 2,359.1 ng/mL.



Human peripheral blood mononuclear cells (PBMC) were cultured unstimulated or stimulated with 10 µg/mL PHA for 5 days. The mean CCL24 concentration was determined to be 6.17 ng/mL in unstimulated PBMC supernatant, 16.05 ng/mL in PHA stimulated PBMC supernatant.



Cytometric bead array standard curve of MP50599-2, CCL24 Monoclonal Matched Antibody Pair, PBS Only. Capture antibody: 60443-3-PBS. Detection antibody: 60443-1-PBS. Standard:Eg0395. Range: 0.195-100 ng/mL