

Osteoglycin Monoclonal Matched Antibody Pair, PBS Only

Catalog Number: **MP50723-1**

Capture Antibody Information

Catalog Number:

66382-1-PBS

Host:

Mouse

Isotype:

IgG1

Purification Method:

Protein G purification

Clone ID:

2A5F11

Reactivity:

human, pig

Immunogen Catalog Number:

Ag3484

Conjugate:

Unconjugated

Full name:

osteoglycin

Gene ID:

4969

Detection Antibody Information

Catalog Number:

66382-2-PBS

Host:

Mouse

Isotype:

IgG1

Purification Method:

Protein G purification

Clone ID:

2C12G2

Reactivity:

human

GenBank:

BC037273

Immunogen Catalog Number:

Ag3484

Conjugate:

Unconjugated

Full name:

osteoglycin

Gene ID:

4969

Applications

Tested Applications:

Cytometric bead array, Sandwich ELISA

Range:0.098-100 ng/mL (Cytometric Bead Array)
78.1-5000 pg/mL (Sandwich ELISA)**Recommended Dilutions:**

It is recommended that this reagent should be titrated in each testing system to obtain optimal results.

Product Information

MP50723-1 targets Osteoglycin in immunoassays as a matched antibody pair. Validated in Cytometric bead array, Sandwich ELISA.

Capture antibody: Osteoglycin Monoclonal antibody, PBS Only (Capture) 66382-1-PBS (2A5F11). 100 µg. Concentration 1 mg/mL.

Detection antibody: Osteoglycin Monoclonal antibody, PBS Only (Detector) 66382-2-PBS (2C12G2). 100 µg. Concentration 1 mg/mL.

Unconjugated mouse monoclonal antibody pair in PBS only storage buffer at a concentration of 1 mg/mL, ready for conjugation.

Matched antibody pairs are designed for use in a variety of assays and platforms that require matched antibody pairs.

Antibody use should be optimized for each application and assay.

Storage

Storage:

Store at -80°C.

Storage buffer:

PBS only

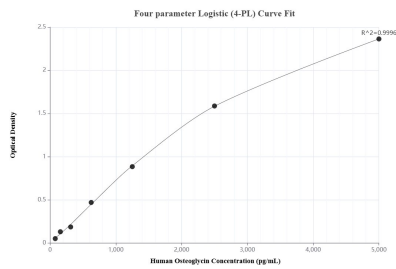
For technical support and original validation data for this product please contact:

T: 1 (888) 4PTGLAB (1-888-478-4522) (toll free in USA), or 1(312) 455-8498 (outside USA)

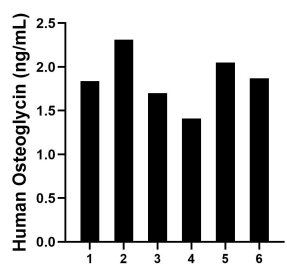
E: proteintech@ptglab.com
W: ptglab.com

This product is exclusively available under Proteintech Group brand and is not available to purchase from any other manufacturer.

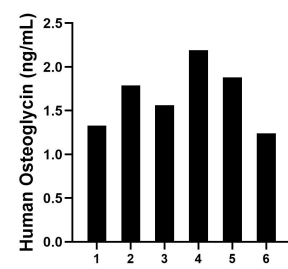
Selected Validation Data



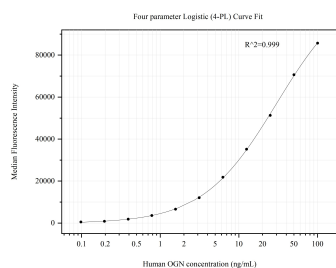
Sandwich ELISA standard curve of MP50723-1, Human Osteoglycin Monoclonal Matched Antibody Pair - PBS only. 66382-1-PBS was coated to a plate as the capture antibody and incubated with serial dilutions of standard Ag3484. 66382-2-PBS was HRP conjugated as the detection antibody. Range: 78.1-5000 pg/mL



Serum of six individual healthy human donors was measured. The Osteoglycin concentration of detected samples was determined to be 1.9 ng/mL with a range of 1.4-2.3 ng/mL.



Plasma of six individual healthy human donors was measured. The Osteoglycin concentration of detected samples was determined to be 1.7 ng/mL with a range of 1.2-2.2 ng/mL.



Cytometric bead array standard curve of MP50723-1, OGN/Osteoglycin Monoclonal Matched Antibody Pair, PBS Only. Capture antibody: 66382-1-PBS. Detection antibody: 66382-2-PBS. Standard: Ag3484. Range: 0.098-100 ng/mL