

# CYP21A2 Monoclonal Matched Antibody Pair, PBS Only

Catalog Number: **MP50770-1**

## Capture Antibody Information

**Catalog Number:**  
67421-2-PBS

**Host:**  
Mouse

**Isotype:**  
IgG1

**Purification Method:**  
Protein G Magarose purification

**Clone ID:**  
1D5A6

**Reactivity:**  
human

**Immunogen Catalog Number:**  
Ag26292

**Conjugate:**  
Unconjugated

**Full name:**  
cytochrome P450, family 21, subfamily A, polypeptide 2

**Gene ID:**  
1589

## Detection Antibody Information

**Catalog Number:**  
67421-3-PBS

**Host:**  
Mouse

**Isotype:**  
IgG1

**Purification Method:**  
Protein G purification

**Clone ID:**  
1A1E2

**Reactivity:**  
human

**GenBank:**  
NM\_000500

**Immunogen Catalog Number:**  
Ag26292

**Conjugate:**  
Unconjugated

**Full name:**  
cytochrome P450, family 21, subfamily A, polypeptide 2

**Gene ID:**  
1589

## Applications

**Tested Applications:**  
Cytometric bead array

**Range:**  
3.125-100 ng/mL (Cytometric Bead Array)

**Recommended Dilutions:**  
It is recommended that this reagent should be titrated in each testing system to obtain optimal results.

## Product Information

MP50770-1 targets CYP21A2 in immunoassays as a matched antibody pair. Validated in Cytometric bead array.

Capture antibody: CYP21A2 Monoclonal antibody, PBS Only (Capture) 67421-2-PBS (1D5A6). 100 µg. Concentration 1 mg/mL.

Detection antibody: CYP21A2 Monoclonal antibody, PBS Only (Detector) 67421-3-PBS (1A1E2). 100 µg. Concentration 1 mg/mL.

Unconjugated mouse monoclonal antibody pair in PBS only storage buffer at a concentration of 1 mg/mL, ready for conjugation.

Matched antibody pairs are designed for use in a variety of assays and platforms that require matched antibody pairs.

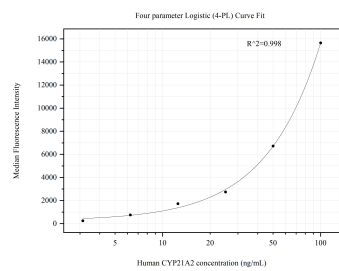
Antibody use should be optimized for each application and assay.

## Storage

**Storage:**  
Store at -80°C.

**Storage buffer:**  
PBS only

# Selected Validation Data



Cytometric bead array standard curve of MP50770-1, CYP21A2 Monoclonal Matched Antibody Pair, PBS Only. Capture antibody: 67421-2-PBS. Detection antibody: 67421-3-PBS. Standard:Ag26292. Range: 3.125-100 ng/mL.