

CCR10 Monoclonal Matched Antibody Pair, PBS Only

Catalog Number: **MP50812-1**

Capture Antibody Information

Catalog Number:
60574-1-PBS
Host:
Mouse
Isotype:
IgG1
Purification Method:
Protein G purification

Clone ID:
4E3E11
Reactivity:
human
Immunogen Catalog Number:
Ag17212

Conjugate:
Unconjugated
Full name:
chemokine (C-C motif) receptor 10
Gene ID:
2826

Detection Antibody Information

Catalog Number:
60574-2-PBS
Host:
Mouse
Isotype:
IgG1
Purification Method:
Protein G purification

Clone ID:
3A4E4
Reactivity:
human
GenBank:
BC099840
Immunogen Catalog Number:
Ag17212

Conjugate:
Unconjugated
Full name:
chemokine (C-C motif) receptor 10
Gene ID:
2826

Applications

Tested Applications:
Cytometric bead array, Sandwich ELISA

Range:
3.125-100 ng/mL (Cytometric Bead Array)
0.781-50 ng/mL (Sandwich ELISA)

Recommended Dilutions:
It is recommended that this reagent should be titrated in each testing system to obtain optimal results.

Product Information

MP50812-1 targets CCR10 in immunoassays as a matched antibody pair. Validated in Cytometric bead array, Sandwich ELISA.

Capture antibody: CCR10 Monoclonal antibody, PBS Only (Capture) 60574-1-PBS (4E3E11). 100 µg. Concentration 1 mg/mL.

Detection antibody: CCR10 Monoclonal antibody, PBS Only (Detector) 60574-2-PBS (3A4E4). 100 µg. Concentration 1 mg/mL.

Unconjugated mouse monoclonal antibody pair in PBS only storage buffer at a concentration of 1 mg/mL, ready for conjugation.

Matched antibody pairs are designed for use in a variety of assays and platforms that require matched antibody pairs.

Antibody use should be optimized for each application and assay.

Storage

Storage:
Store at -80°C.
Storage buffer:
PBS only

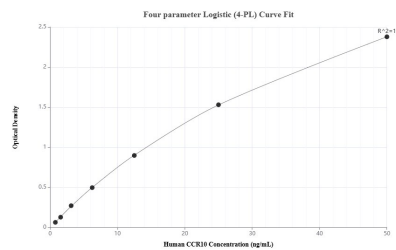
For technical support and original validation data for this product please contact:

T: 1 (888) 4PTGLAB (1-888-478-4522) (toll free in USA), or 1(312) 455-8498 (outside USA)

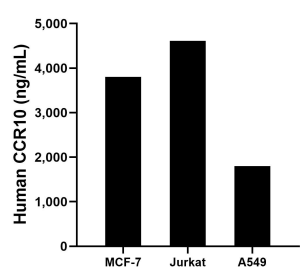
E: proteintech@ptglab.com
W: ptglab.com

This product is exclusively available under Proteintech Group brand and is not available to purchase from any other manufacturer.

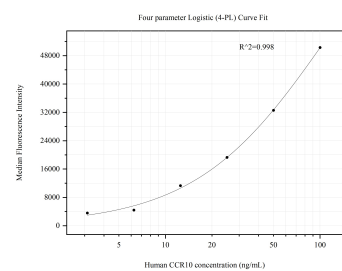
Selected Validation Data



Sandwich ELISA standard curve of MP50812-1, Human CCR10 Monoclonal Matched Antibody Pair - PBS only. 60574-1-PBS was coated to a plate as the capture antibody and incubated with serial dilutions of standard Ag17212. 60574-2-PBS was HRP conjugated as the detection antibody. Range: 0.781-50 ng/mL



The mean CCR10 concentration was determined to be 3,805.97 ng/mL in MCF-7 cell extract based on a 1.3 mg/mL extract load, 4,613.54 ng/mL in Jurkat cell extract based on a 1.9 mg/mL extract load and 1,804.16 ng/mL in A549 cell extract based on a 3.1 mg/mL extract load.



Cytometric bead array standard curve of MP50812-1, CCR10 Monoclonal Matched Antibody Pair, PBS Only. Capture antibody: 60574-1-PBS. Detection antibody: 60574-2-PBS. Standard: Ag17212. Range: 3.125-100 ng/mL