

SOST/Sclerostin Monoclonal Matched Antibody Pair, PBS Only

Catalog Number: **MP51041-2**

Capture Antibody Information

Catalog Number:
60726-1-PBS
Host:
Mouse
Isotype:
IgG2a
Purification Method:
Protein A purification

Clone ID:
1E10G2
Reactivity:
human

Conjugate:
Unconjugated
Full name:
sclerosteosis
Gene ID:
50964

Detection Antibody Information

Catalog Number:
60726-3-PBS
Host:
Mouse
Isotype:
IgG1
Purification Method:
Protein G purification

Clone ID:
1G6E11
Reactivity:
human
GenBank:
BC101086

Conjugate:
Unconjugated
Full name:
sclerosteosis
Gene ID:
50964

Applications

Tested Applications:
Cytometric bead array, Sandwich ELISA

Range:
0.391-100 ng/mL (Cytometric Bead Array)
156-5000 pg/mL (Sandwich ELISA)

Recommended Dilutions:
It is recommended that this reagent should be titrated in each testing system to obtain optimal results.

Product Information

MP51041-2 targets SOST/Sclerostin in immunoassays as a matched antibody pair. Validated in Cytometric bead array, Sandwich ELISA.

Capture antibody: SOST/Sclerostin Monoclonal antibody, PBS Only (Capture) 60726-1-PBS (1E10G2). 100 µg. Concentration 1 mg/mL.

Detection antibody: SOST/Sclerostin Monoclonal antibody, PBS Only (Detector) 60726-3-PBS (1G6E11). 100 µg. Concentration 1 mg/mL.

Unconjugated mouse monoclonal antibody pair in PBS only storage buffer at a concentration of 1 mg/mL, ready for conjugation.

Matched antibody pairs are designed for use in a variety of assays and platforms that require matched antibody pairs.

Antibody use should be optimized for each application and assay.

Storage

Storage:
Store at -80°C.
Storage buffer:
PBS only

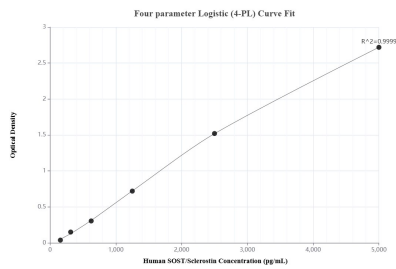
For technical support and original validation data for this product please contact:

T: 1 (888) 4PTGLAB (1-888-478-4522) (toll free in USA), or 1(312) 455-8498 (outside USA)

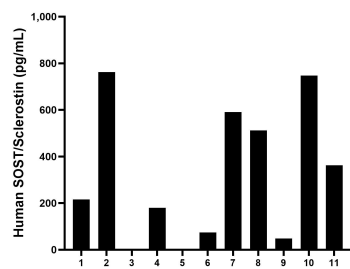
E: proteintech@ptglab.com
W: ptglab.com

This product is exclusively available under Proteintech Group brand and is not available to purchase from any other manufacturer.

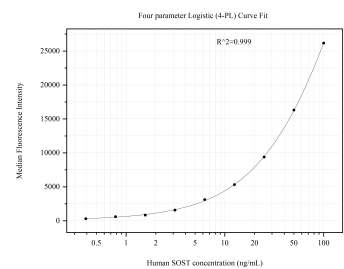
Selected Validation Data



Sandwich ELISA standard curve of MP51041-2, Human SOST/Sclerostin Monoclonal Matched Antibody Pair - PBS only. 60726-1-PBS was coated to a plate as the capture antibody and incubated with serial dilutions of standard Eg0407. 60726-3-PBS was HRP conjugated as the detection antibody. Range: 156-5000 pg/mL



Serum of eleven individual healthy human donors was measured. The SOST/Sclerostin concentration of detected samples was determined to be 388.2 pg/mL with a range of ND-762.5 pg/mL



Cytometric bead array standard curve of MP51041-2, SOST Monoclonal Matched Antibody Pair, PBS Only. Capture antibody: 60726-1-PBS. Detection antibody: 60726-3-PBS. Standard:Eg0407. Range: 0.391-100 ng/mL