

TGFBR1 Monoclonal Matched Antibody Pair, PBS Only

Catalog Number: **MP51081-2**

Capture Antibody Information

Catalog Number:
60748-3-PBS
Host:
Mouse
Isotype:
IgG1
Purification Method:
Protein G Magarose purification

Clone ID:
1H5F9
Reactivity:
human
Immunogen Catalog Number:
Ag31620

Conjugate:
Unconjugated
Full name:
transforming growth factor, beta receptor 1
Gene ID:
7046

Detection Antibody Information

Catalog Number:
60748-4-PBS
Host:
Mouse
Isotype:
IgG1
Purification Method:
Protein G purification

Clone ID:
1C8H1
Reactivity:
human
GenBank:
NM_004612
Immunogen Catalog Number:
Ag31620

Conjugate:
Unconjugated
Full name:
transforming growth factor, beta receptor 1
Gene ID:
7046

Applications

Tested Applications:
Cytometric bead array, Sandwich ELISA

Range:
0.391-100 ng/mL (Cytometric Bead Array)
46.9-3000 pg/mL (Sandwich ELISA)

Recommended Dilutions:
It is recommended that this reagent should be titrated in each testing system to obtain optimal results.

Product Information

MP51081-2 targets TGFBR1 in immunoassays as a matched antibody pair. Validated in Cytometric bead array, Sandwich ELISA.

Capture antibody: TGFBR1 Monoclonal antibody, PBS Only (Capture) 60748-3-PBS (1H5F9). 100 µg. Concentration 1 mg/mL.

Detection antibody: TGFBR1 Monoclonal antibody, PBS Only (Detector) 60748-4-PBS (1C8H1). 100 µg. Concentration 1 mg/mL.

Unconjugated mouse monoclonal antibody pair in PBS only storage buffer at a concentration of 1 mg/mL, ready for conjugation.

Matched antibody pairs are designed for use in a variety of assays and platforms that require matched antibody pairs.

Antibody use should be optimized for each application and assay.

Storage

Storage:
Store at -80°C.
Storage buffer:
PBS only

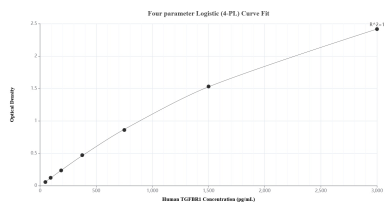
For technical support and original validation data for this product please contact:

T: 1 (888) 4PTGLAB (1-888-478-4522) (toll free in USA), or 1(312) 455-8498 (outside USA)

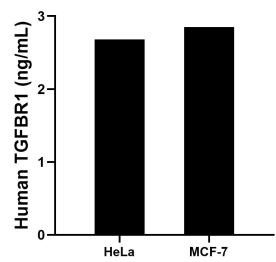
E: proteintech@ptglab.com
W: ptglab.com

This product is exclusively available under Proteintech Group brand and is not available to purchase from any other manufacturer.

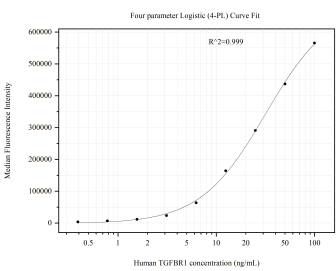
Selected Validation Data



Sandwich ELISA standard curve of MP51081-2, Human TGFBR1 Monoclonal Matched Antibody Pair - PBS only. 60748-3-PBS was coated to a plate as the capture antibody and incubated with serial dilutions of standard Ag31620. 60748-4-PBS was HRP conjugated as the detection antibody. Range: 46.9-3000 pg/mL



The mean TGFBR1 concentration was determined to be 2.7 ng/mL in HeLa cell extract based on a 1.8 mg/mL extract load and 2.9 ng/mL in MCF-7 cell extract based on a 2.4 mg/mL extract load.



Cytometric bead array standard curve of MP51081-2, TGFBR1 Monoclonal Matched Antibody Pair, PBS Only. Capture antibody: 60748-3-PBS. Detection antibody: 60748-4-PBS. Standard: Ag31620. Range: 0.391-100 ng/mL