

CA15-3,MUC1 Monoclonal Matched Antibody Pair, PBS Only

Catalog Number:MP51087-2

Capture Antibody Information

Catalog Number:
60749-3-PBS

Host:
Mouse

Isotype:
IgG1

Purification Method:
Protein G purification

Clone ID:
2F7A6

Reactivity:
human

Immunogen Catalog Number:
Ag17660

Conjugate:
Unconjugated

Full name:
mucin 1, cell surface associated

Gene ID:
4582

Detection Antibody Information

Catalog Number:
60749-5-PBS

Host:
Mouse

Isotype:
IgG1

Purification Method:
Protein G Magarose purification

Clone ID:
3H10A3

Reactivity:
human

GenBank:
BC120975

Immunogen Catalog Number:
Ag17660

Conjugate:
Unconjugated

Full name:
mucin 1, cell surface associated

Gene ID:
4582

Applications

Tested Applications:

Cytometric bead array, Sandwich ELISA

Range:

0.391-100 ng/mL (Cytometric Bead Array)
0.78-50 ng/mL (Sandwich ELISA)

Recommended Dilutions:

It is recommended that this reagent should be titrated in each testing system to obtain optimal results.

Product Information

MP51087-2 targets CA15-3,MUC1 in immunoassays as a matched antibody pair. Validated in Cytometric bead array, Sandwich ELISA.

Capture antibody: CA15-3,MUC1 Monoclonal antibody, PBS Only (Capture) 60749-3-PBS (2F7A6). 100 µg. Concentration 1 mg/mL.

Detection antibody: CA15-3,MUC1 Monoclonal antibody, PBS Only (Detector) 60749-5-PBS (3H10A3). 100 µg. Concentration 1 mg/mL.

Unconjugated mouse monoclonal antibody pair in PBS only storage buffer at a concentration of 1 mg/mL, ready for conjugation.

Matched antibody pairs are designed for use in a variety of assays and platforms that require matched antibody pairs.

Antibody use should be optimized for each application and assay.

Storage

Storage:

Store at -80°C.

Storage buffer:
PBS only

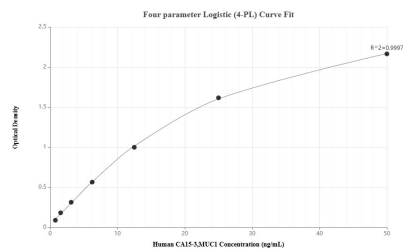
For technical support and original validation data for this product please contact:

T: 1 (888) 4PTGLAB (1-888-478-4522) (toll free in USA), or 1(312) 455-8498 (outside USA)

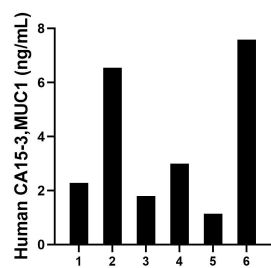
E: proteintech@ptglab.com
W: ptglab.com

This product is exclusively available under Proteintech Group brand and is not available to purchase from any other manufacturer.

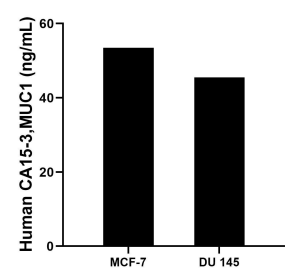
Selected Validation Data



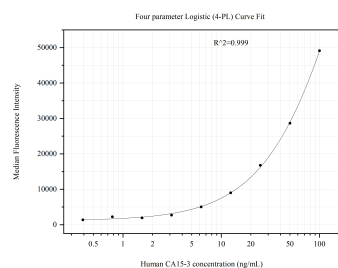
Sandwich ELISA standard curve of MP51087-2, Human CA15-3,MUC1 Monoclonal Matched Antibody Pair - PBS only. 60749-3-PBS was coated to a plate as the capture antibody and incubated with serial dilutions of standard Ag17660. 60749-5-PBS was HRP conjugated as the detection antibody. Range: 0.78-50 ng/mL



Serum of six individual healthy human donors was measured. The human CA15-3,MUC1 concentration of detected samples was determined to be 3.72 ng/mL with a range of 1.14-7.58 ng/mL



The mean CA15-3,MUC1 concentration was determined to be 53.46 ng/mL in MCF-7 cell extract based on a 1.3 mg/mL extract load and 45.49 ng/mL in DU 145 cell extract based on a 2.0 mg/mL extract load.



Cytometric bead array standard curve of MP51087-2, CA15-3,MUC1 Monoclonal Matched Antibody Pair, PBS Only. Capture antibody: 60749-3-PBS. Detection antibody: 60749-5-PBS. Standard:Ag17660. Range: 0.391-100 ng/mL