

# Cardiac Troponin I Monoclonal Matched Antibody Pair, PBS Only

Catalog Number: **MP51198-1**

## Capture Antibody Information

Catalog Number:  
66376-2-PBS

Host:  
Mouse

Isotype:  
IgG2b

Purification Method:  
Protein A purification

Clone ID:  
1C5E8

Reactivity:  
human

Immunogen Catalog Number:  
Ag16758

Conjugate:  
Unconjugated

Full name:  
troponin I type 3 (cardiac)

Gene ID:  
7137

## Detection Antibody Information

Catalog Number:  
66376-1-PBS

Host:  
Mouse

Isotype:  
IgG1

Purification Method:  
Protein G purification

Clone ID:  
1D5D6

Reactivity:  
human, mouse, rat, pig, rabbit

GenBank:  
BC096165

Immunogen Catalog Number:  
Ag16758

Conjugate:  
Unconjugated

Full name:  
troponin I type 3 (cardiac)

Gene ID:  
7137

## Applications

Tested Applications:

Cytometric bead array, Sandwich ELISA

Range:

12.5-400 ng/mL (Cytometric Bead Array)  
0.156-10 ng/mL (Sandwich ELISA)

Recommended Dilutions:

It is recommended that this reagent should be titrated in each testing system to obtain optimal results.

## Product Information

MP51198-1 targets Cardiac Troponin I in immunoassays as a matched antibody pair. Validated in Cytometric bead array, Sandwich ELISA.

Capture antibody: Cardiac Troponin I Monoclonal antibody, PBS Only (Capture) 66376-2-PBS (1C5E8). 100 µg. Concentration 1 mg/mL.

Detection antibody: Cardiac Troponin I Monoclonal antibody, PBS Only (Detector) 66376-1-PBS (1D5D6). 100 µg. Concentration 1 mg/mL.

Unconjugated mouse monoclonal antibody pair in PBS only storage buffer at a concentration of 1 mg/mL, ready for conjugation.

Matched antibody pairs are designed for use in a variety of assays and platforms that require matched antibody pairs.

Antibody use should be optimized for each application and assay.

## Storage

Storage:

Store at -80°C.

Storage buffer:  
PBS only

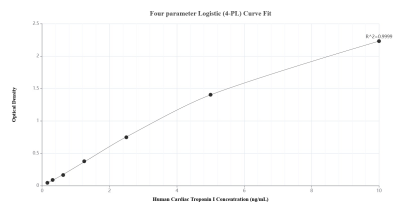
For technical support and original validation data for this product please contact:

T: 1 (888) 4PTGLAB (1-888-478-4522) (toll free in USA), or 1(312) 455-8498 (outside USA)

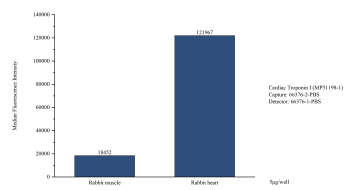
E: [proteintech@ptglab.com](mailto:proteintech@ptglab.com)  
W: [ptglab.com](http://ptglab.com)

**This product is exclusively available under Proteintech Group brand and is not available to purchase from any other manufacturer.**

# Selected Validation Data



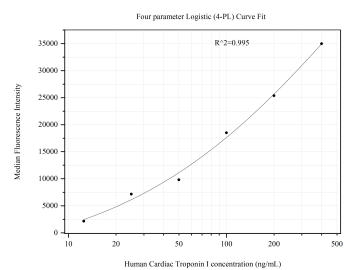
Sandwich ELISA standard curve of MP51198-1, Human Cardiac Troponin I Monoclonal Matched Antibody Pair - PBS only. 66376-2-PBS was coated to a plate as the capture antibody and incubated with serial dilutions of standard Ag16758. 66376-1-PBS was HRP conjugated as the detection antibody. Range: 0.156-10 ng/mL



Cytometric bead array in cell lysate using MP51198-1, Cardiac Troponin I Monoclonal Matched Antibody Pair, PBS Only. Capture antibody: 66376-2-PBS. Detection antibody: 66376-1-PBS. Cell lysate: Rabbit muscle, Rabbit heart.



The mean Cardiac Troponin I concentration was determined to be 220.78 ng/mL in mouse heart tissue extract based on a 7.10 mg/mL extract load.



Cytometric bead array standard curve of MP51198-1, Cardiac Troponin I Monoclonal Matched Antibody Pair, PBS Only. Capture antibody: 66376-2-PBS. Detection antibody: 66376-1-PBS. Standard:Ag16758. Range: 12.5-400 ng/mL