

SLC12A2 Monoclonal Matched Antibody Pair, PBS Only

Catalog Number: **MP51301-1**

Capture Antibody Information

Catalog Number:
60887-1-PBS
Host:
Mouse
Isotype:
IgG1
Purification Method:
Protein G Magarose purification

Clone ID:
1A2B2
Reactivity:
human
Immunogen Catalog Number:
Ag27901

Conjugate:
Unconjugated
Full name:
solute carrier family 12 (sodium/potassium/chloride transporters), member 2
Gene ID:
6558

Detection Antibody Information

Catalog Number:
60887-2-PBS
Host:
Mouse
Isotype:
IgG1
Purification Method:
Protein G Magarose purification

Clone ID:
2B8C4
Reactivity:
human
GenBank:
BC033003
Immunogen Catalog Number:
Ag27901

Conjugate:
Unconjugated
Full name:
solute carrier family 12 (sodium/potassium/chloride transporters), member 2
Gene ID:
6558

Applications

Tested Applications:
Cytometric bead array

Range:
0.195-12.5 ng/mL (Cytometric Bead Array)

Recommended Dilutions:
It is recommended that this reagent should be titrated in each testing system to obtain optimal results.

Product Information

MP51301-1 targets SLC12A2 in immunoassays as a matched antibody pair. Validated in Cytometric bead array.

Capture antibody: SLC12A2 Monoclonal antibody, PBS Only (Capture) 60887-1-PBS (1A2B2). 100 µg. Concentration 1 mg/mL.

Detection antibody: NKCC1/SLC12A2 Monoclonal antibody, PBS Only (Detector) 60887-2-PBS (2B8C4). 100 µg. Concentration 1 mg/mL.

Unconjugated mouse monoclonal antibody pair in PBS only storage buffer at a concentration of 1 mg/mL, ready for conjugation.

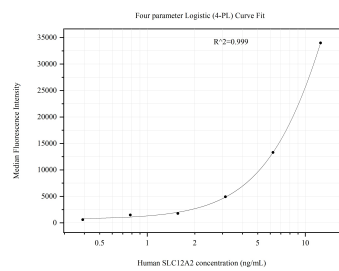
Matched antibody pairs are designed for use in a variety of assays and platforms that require matched antibody pairs.

Antibody use should be optimized for each application and assay.

Storage

Storage:
Store at -80°C.
Storage buffer:
PBS only

Selected Validation Data



Cytometric bead array standard curve of MP51301-1, SLC12A2 Monoclonal Matched Antibody Pair, PBS Only. Capture antibody: 60887-1-PBS. Detection antibody: 60887-2-PBS. Standard:Ag27901. Range: 0.195-12.5 ng/mL