

For Research Use Only

IL-12/IL-23 p40 Monoclonal Matched Antibody Pair, PBS Only



Catalog Number:MP51316-3

Capture Antibody Information

Catalog Number:
60898-4-PBS

Host:
Mouse

Isotype:
IgG1

Purification Method:
Protein G purification

Clone ID:
1G1D1

Reactivity:
human

Immunogen Catalog Number:
HZ-1254

Conjugate:
Unconjugated

Full name:
interleukin 23, alpha subunit p19

Gene ID:
51561

Detection Antibody Information

Catalog Number:
60898-5-PBS

Host:
Mouse

Isotype:
IgG1

Purification Method:
Protein G purification

Clone ID:
7F8A5

Reactivity:
human

GenBank:
Immunogen Catalog Number:

HZ-1254

Conjugate:
Unconjugated

Full name:
interleukin 23, alpha subunit p19

Gene ID:
51561

Applications

Tested Applications:
Cytometric bead array

Range:
0.098-100 ng/mL (Cytometric Bead Array)

Recommended Dilutions:
It is recommended that this reagent should be titrated in each testing system to obtain optimal results.

Product Information

MP51316-3 targets IL-12/IL-23 p40 in immunoassays as a matched antibody pair. Validated in Cytometric bead array.

Capture antibody: IL-23 p19 Monoclonal antibody, PBS Only (Capture) 60898-4-PBS (1G1D1). 100 µg. Concentration 1 mg/mL.

Detection antibody: IL-23 p19 Monoclonal antibody, PBS Only (Detector) 60898-5-PBS (7F8A5). 100 µg. Concentration 1 mg/mL.

Unconjugated mouse monoclonal antibody pair in PBS only storage buffer at a concentration of 1 mg/mL, ready for conjugation.

Matched antibody pairs are designed for use in a variety of assays and platforms that require matched antibody pairs.

Antibody use should be optimized for each application and assay.

Storage

Storage:
Store at -80°C.
Storage buffer:
PBS only

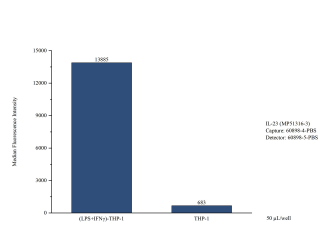
For technical support and original validation data for this product please contact:

T: 1 (888) 4PTGLAB (1-888-478-4522) (toll free in USA), or 1(312) 455-8498 (outside USA)

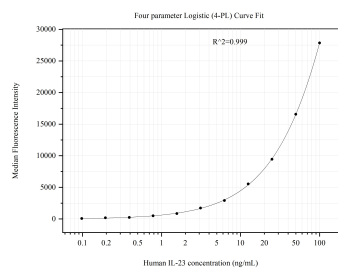
E: proteintech@ptglab.com
W: ptglab.com

This product is exclusively available under Proteintech Group brand and is not available to purchase from any other manufacturer.

Selected Validation Data



Cytometric bead array of THP-1 cells supernatant using MP51316-3, L-12/IL-23 p40 Monoclonal Matched Antibody Pair, PBS Only. Capture antibody: 60898-4-PBS. Detection antibody: 60898-5-PBS. THP-1 cells were cultured unstimulated or stimulated with 100ng/ml LPS and 50ng/ml IFN gamma (HZ-1301) for 24 hours. 50 μ L of the supernatant was analyzed using MP51316-3.



Cytometric bead array standard curve of MP51316-3, L-12/IL-23 p40 Monoclonal Matched Antibody Pair, PBS Only. Capture antibody: 60898-4-PBS. Detection antibody: 60898-5-PBS. Standard:HZ-1254. Range: 0.098-100 ng/mL