

# CFLAR Monoclonal Matched Antibody Pair, PBS Only

Catalog Number: **MP51317-2**

## Capture Antibody Information

**Catalog Number:**  
60901-1-PBS  
**Host:**  
Mouse  
**Isotype:**  
IgG1  
**Purification Method:**  
Protein G purification

**Clone ID:**  
3D12F5  
**Reactivity:**  
human  
**Immunogen Catalog Number:**  
Ag31024

**Conjugate:**  
Unconjugated  
**Full name:**  
CASP8 and FADD-like apoptosis regulator  
**Gene ID:**  
8837

## Detection Antibody Information

**Catalog Number:**  
60901-3-PBS  
**Host:**  
Mouse  
**Isotype:**  
IgG1  
**Purification Method:**  
Protein G Magarose purification

**Clone ID:**  
2G4E7  
**Reactivity:**  
human  
**GenBank:**  
BC001602  
**Immunogen Catalog Number:**  
Ag31024

**Conjugate:**  
Unconjugated  
**Full name:**  
CASP8 and FADD-like apoptosis regulator  
**Gene ID:**  
8837

## Applications

**Tested Applications:**  
Cytometric bead array

**Range:**  
0.391-200 ng/mL (Cytometric Bead Array)

**Recommended Dilutions:**  
It is recommended that this reagent should be titrated in each testing system to obtain optimal results.

## Product Information

MP51317-2 targets CFLAR in immunoassays as a matched antibody pair. Validated in Cytometric bead array.

Capture antibody: CFLAR Monoclonal antibody, PBS Only (Capture) 60901-1-PBS (3D12F5). 100 µg. Concentration 1 mg/mL.

Detection antibody: CFLAR Monoclonal antibody, PBS Only (Detector) 60901-3-PBS (2G4E7). 100 µg. Concentration 1 mg/mL.

Unconjugated mouse monoclonal antibody pair in PBS only storage buffer at a concentration of 1 mg/mL, ready for conjugation.

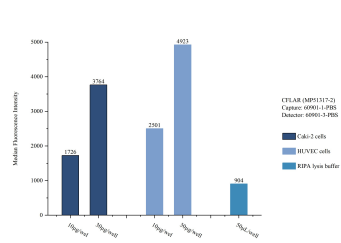
Matched antibody pairs are designed for use in a variety of assays and platforms that require matched antibody pairs.

Antibody use should be optimized for each application and assay.

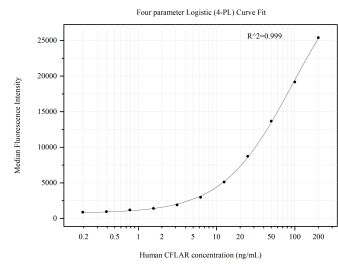
## Storage

**Storage:**  
Store at -80°C.  
**Storage buffer:**  
PBS only

# Selected Validation Data



Sample test of MP51317-2, CFLAR Monoclonal Matched Antibody Pair, PBS Only. Capture antibody: 60901-1-PBS. Detection antibody: 60901-3-PBS.



Cytometric bead array standard curve of MP51317-2, CFLAR Monoclonal Matched Antibody Pair, PBS Only. Capture antibody: 60901-1-PBS. Detection antibody: 60901-3-PBS. Standard:Ag31024. Range: 0.391-200 ng/mL.