

For Research Use Only

ADA Monoclonal Matched Antibody Pair, PBS Only



Catalog Number: **MP51321-3**

Capture Antibody Information

Catalog Number:

67870-5-PBS

Host:

Mouse

Isotype:

IgG1

Purification Method:

Protein G purification

Clone ID:

1G7E2

Reactivity:

human

Immunogen Catalog Number:

Ag31326

Conjugate:

Unconjugated

Full name:

adenosine deaminase

Gene ID:

100

Detection Antibody Information

Catalog Number:

67870-6-PBS

Host:

Mouse

Isotype:

IgG1

Purification Method:

Protein G Magarose purification

Clone ID:

2C1B5

Reactivity:

human

GenBank:

BC040226

Immunogen Catalog Number:

Ag31326

Conjugate:

Unconjugated

Full name:

adenosine deaminase

Gene ID:

100

Applications

Tested Applications:

Cytometric bead array

Range:

12.5-200 ng/mL (Cytometric Bead Array)

Recommended Dilutions:

It is recommended that this reagent should be titrated in each testing system to obtain optimal results.

Product Information

MP51321-3 targets ADA in immunoassays as a matched antibody pair. Validated in Cytometric bead array.

Capture antibody: ADA Monoclonal antibody, PBS Only (Capture) 67870-5-PBS (1G7E2). 100 µg. Concentration 1 mg/mL.

Detection antibody: ADA Monoclonal antibody, PBS Only (Detector) 67870-6-PBS (2C1B5). 100 µg. Concentration 1 mg/mL.

Unconjugated mouse monoclonal antibody pair in PBS only storage buffer at a concentration of 1 mg/mL, ready for conjugation.

Matched antibody pairs are designed for use in a variety of assays and platforms that require matched antibody pairs.

Antibody use should be optimized for each application and assay.

Storage

Storage:

Store at -80°C.

Storage buffer:

PBS only

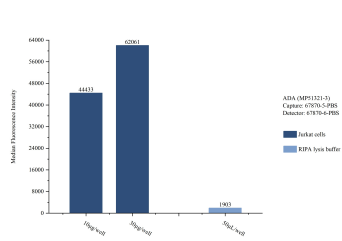
For technical support and original validation data for this product please contact:

T: 1 (888) 4PTGLAB (1-888-478-4522) (toll free in USA), or 1(312) 455-8498 (outside USA)

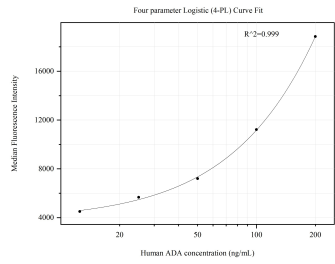
E: proteintech@ptglab.com
W: ptglab.com

This product is exclusively available under Proteintech Group brand and is not available to purchase from any other manufacturer.

Selected Validation Data



Sample test of MP51321-3, ADA Monoclonal Matched Antibody Pair, PBS Only. Capture antibody: 67870-5-PBS. Detection antibody: 67870-6-PBS.



Cytometric bead array standard curve of MP51321-3, ADA Monoclonal Matched Antibody Pair, PBS Only. Capture antibody: 67870-5-PBS. Detection antibody: 67870-6-PBS. Standard: Ag31326. Range: 12.5-200 ng/mL.